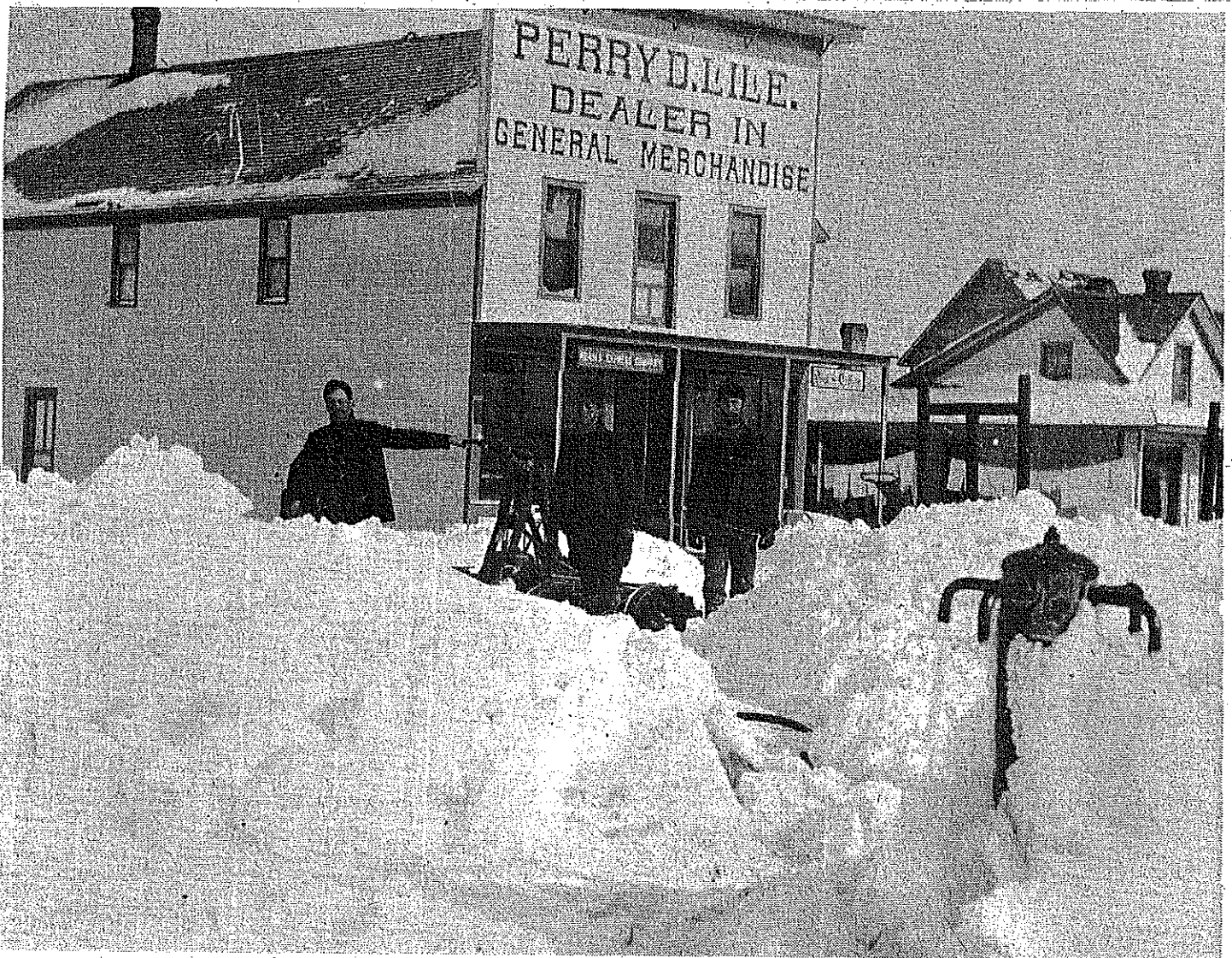


Perry D. Lile Store, circa 1900's
Dealer in General Merchandise
Post Office & Adams Express located in store

Oden, Emmet County, Michigan

Oden, Emmet County, Michigan 1900's



ODEN -- This photo should be of interest to summer visitors as well as old timers because it gives a winter view of Oden in the early 1900's. The photo was brought in by Mrs. Nellie Roche who received it from Walter Engle of Oden and Lakeland, Fla. and it was taken by his mother, Anna. The Oden post office and Adams Express Co. were located in the Perry D. Lile store and that's a flowing well in the foreground. The section crew of the Grand Rapids & Indiana Railroad here with the half-buried handcar are, left to right, Winnie Baird, Charles Engle and John Houts and they were clearing the drifts off the track.