

PETOSKEY, EMMET COUNTY, MICHIGAN POSTCARDS

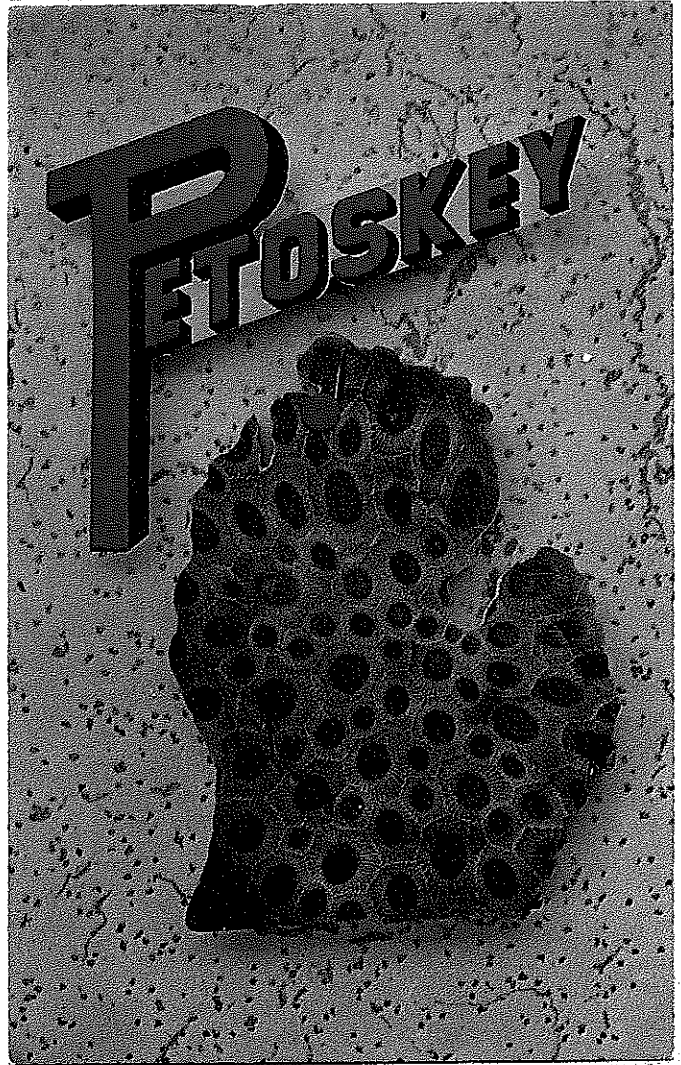
PIN

Back of Petoskey Post Card:

The Petoskey Stone

Genus Hexagonaria, is found most extensively in this area of Michigan along the beaches and in many gravel pits. This fossil colonial coral is a favorite with stone collectors and Lapidaries.

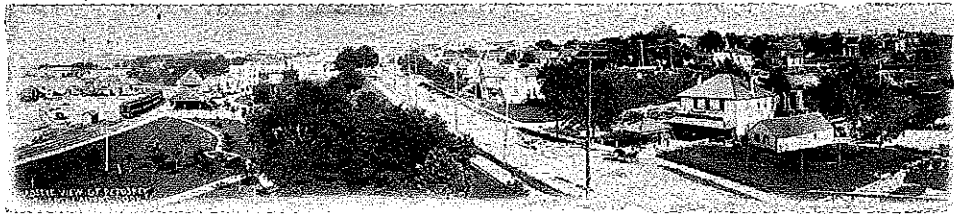
*Published by Helen Gaskin, Charlevoix, Mi. 49720
No Date*



Back of "Only One Petoskey" Postcard

Date on postcard: July 12, 1913

Alton G. Cook, Publisher, Petoskey, Mich.



BIRD'S-EYE VIEW OF PETOSKEY, MICH.

"THERE'S ONLY ONE PETOSKEY"

OUR SLOGAN

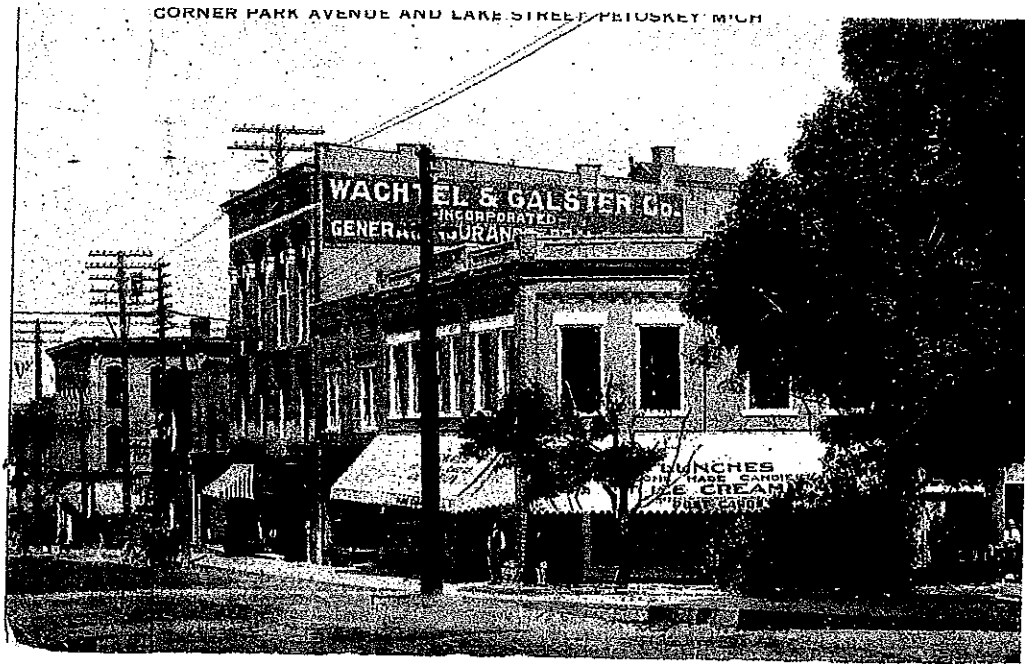
"There's only one Petoskey,"
It's on Little Traverse' shore,
Such fishing and such boating
Were never known before.

"There's only one Petoskey,"
Where the sunset's azure hue,
Makes one feel life's worth living,
In Petoskey or Bay View.

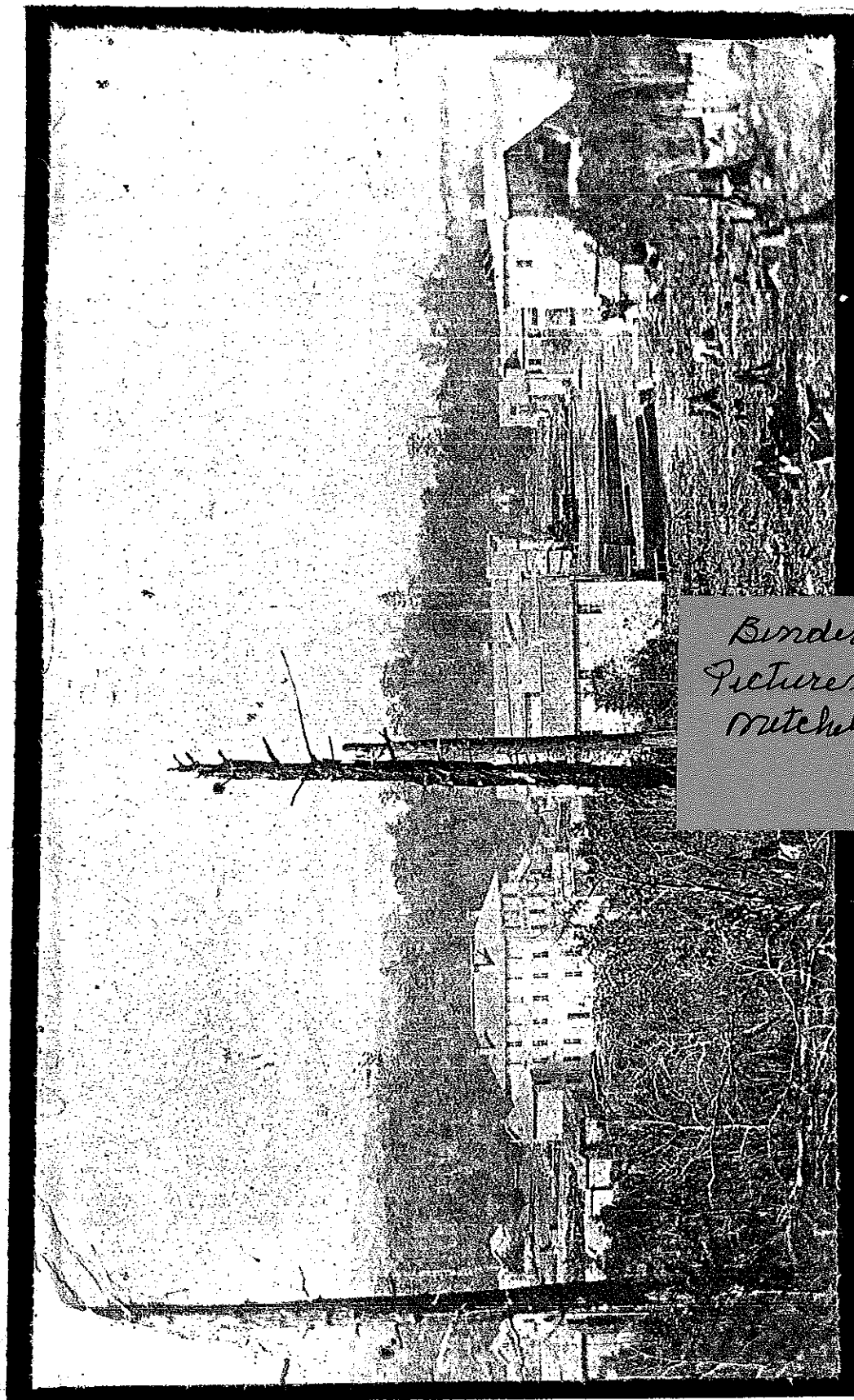
"There's only one Petoskey,"
So the tens of thousands say,
Who come here every summer,
To pass the time away.

All o'er our country wide,
You'll hear these thousands say,
"There's only one Petoskey,"
And Little Traverse Bay.

**Corner Park Avenue and Lake Street
Petoskey, Emmet County, Michigan
Alton Cook, Publisher, Petoskey
Post Card date 1913**



Lake Street From Division Street
Petoskey, Emmet County, Michigan
Circa 1875



*Binder III
Pictures
Mitchell St*

Mitchell Street, Petoskey, Emmet County, Michigan
Winter Sidewalk
Taken roughly in front of what is today the
"Horizon Books Store" looking East.
Date Unknown



**East Mitchell Street
Petoskey, Emmet County, Michigan
Date on Post Card August 4, 1906**



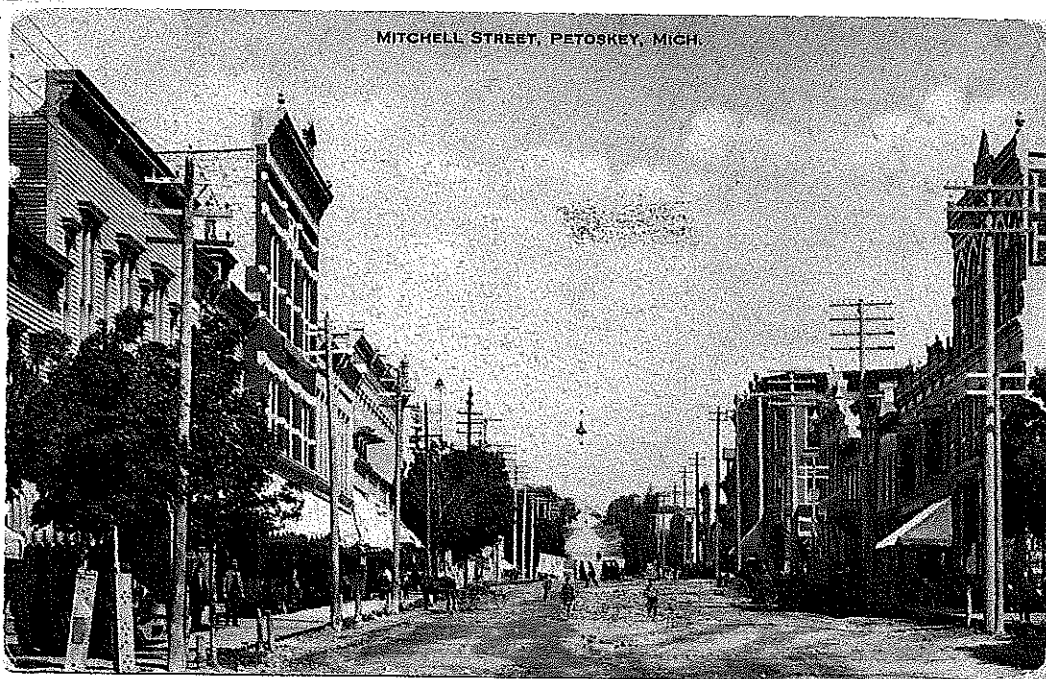
Copyright 1906 by the Photograph Co.

A 7477 E. Mitchell St., Petoskey, Mich.

8/4/06.

*Cordial greetings to all the family, including
my dear ones from. Hope you are all well. Sincerely,
L. M. Smith*

**Mitchell Street
Petoskey, Emmet County, Michigan
Date on Post Card September 8, 1913**



MITCHELL STREET, PETOSKEY, MICH.