

*Lighthouse
Breakwall*

LIGHTHOUSE and BREAKWATER

Petoskey, Emmet County, Michigan

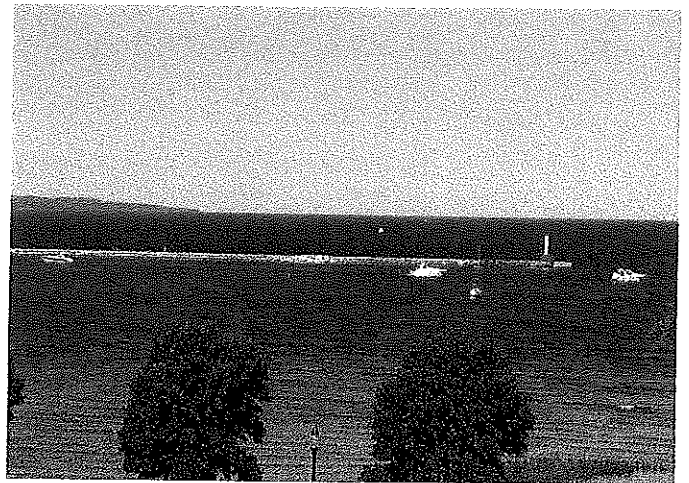
Petoskey Breakwater

Excerpts from General Toll History
Greenwood Cemetery Records

.....General Toll, in his role as president, became known as the "father of the breakwater" for garnering the funds for its construction and overseeing the project. His hard work helped make Petoskey's harbor a safer place for the large number of boats which docked here daily.....



Breakwater & Light House, Petoskey, Michigan



Petoskey Breakwater - Then and Now

More Excerpts from General Toll History
Greenwood Cemetery Records

.....Isaac was elected village President in 1881 and 1882. As president, he became known as the "father of the breakwater" for raising funds and overseeing the breakwater project.....

~~~~~

*The Petoskey Record*  
*Wednesday, September 9, 1903*

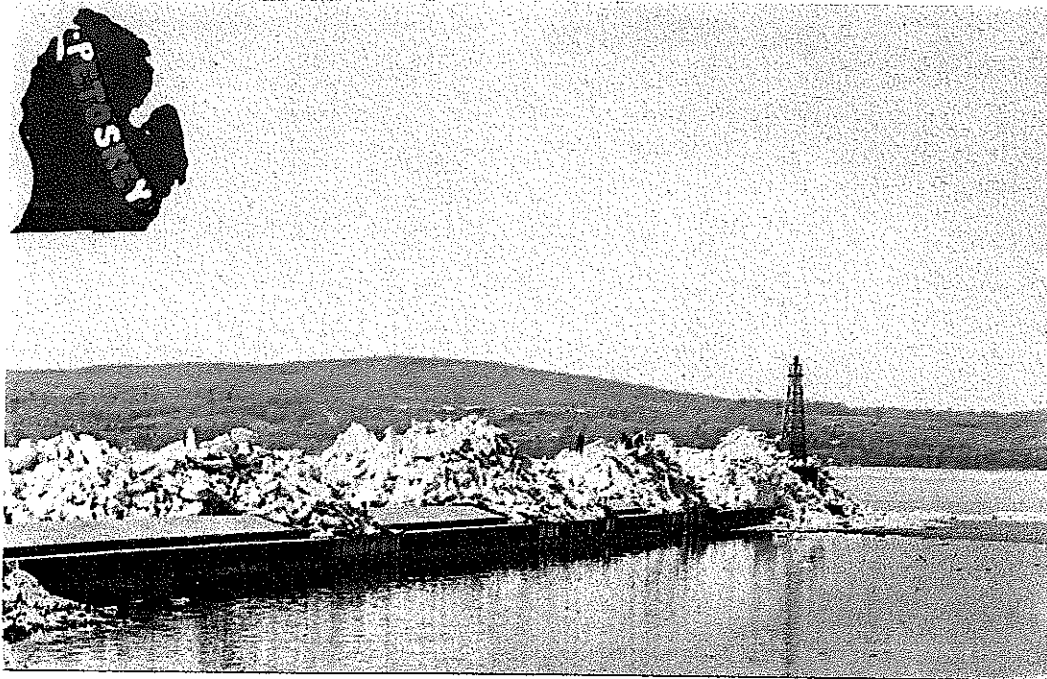
Work on the breakwater is to be commenced not later than May 1st next and completed not later than Nov. 1st 1904. The present east wing will be taken out and put on the north end of the west wing and another 100-foot crib added.

## Lighthouse and Breakwater

**Back: Ice piled onto Lighthouse and Breakwater at  
Petoskey, Michigan**

**On April 4, 1963, a strong Gale from the west pushed millions of tons of additional ice  
into already ice-filled Little Traverse Bay. The rotting ice broke into small chunks  
as it was piled from 20 to 40 feet high all along the shore.**

**Published by Bob Miles, Charlevoix No Postage**



**Back: Lighthouse on Breakwater Petoskey, Michigan**

**Located on the Southeastern shore of Little Traverse Bay, this fine harbor, formed by the  
Breakwater, has a modern Pier that gives excellent anchorage for craft of all kinds.**

**Published by Bob Miles, Charlevoix, Michigan No Postage**

