

**BATTERBEE ICE COMPANY
AND
MERCHANTS DELIVERY SERVICE**

**Ice House on Round Lake
Business & Ice Crusher
911 Franklin Street, Petoskey**

**BATTERBEE ICE COMPANY
AND
MERCHANTS DELIVERY SERVICE**

Harvest Tons From Round Lk. This Week

Electric refrigerators haven't taken over completely—at least Clair Batterbee, of the Batterbee Ice Co. didn't think so this past week when he started storing between 7,000 and 8,000 cakes of ice weighing between 200 pounds each that he and his crew of 13 cut in Emmet's Round Lake.

Business was so good last year that Batterbee ran out of ice and had to buy more. Commercial sales of ice has gone up since he took over from Scott Jewell in 1948, but home sales have fallen off about 80 per cent. Five years ago he had 300 to 400 home stops, he said, between Petoskey, Bay View and Alanson in the summer.

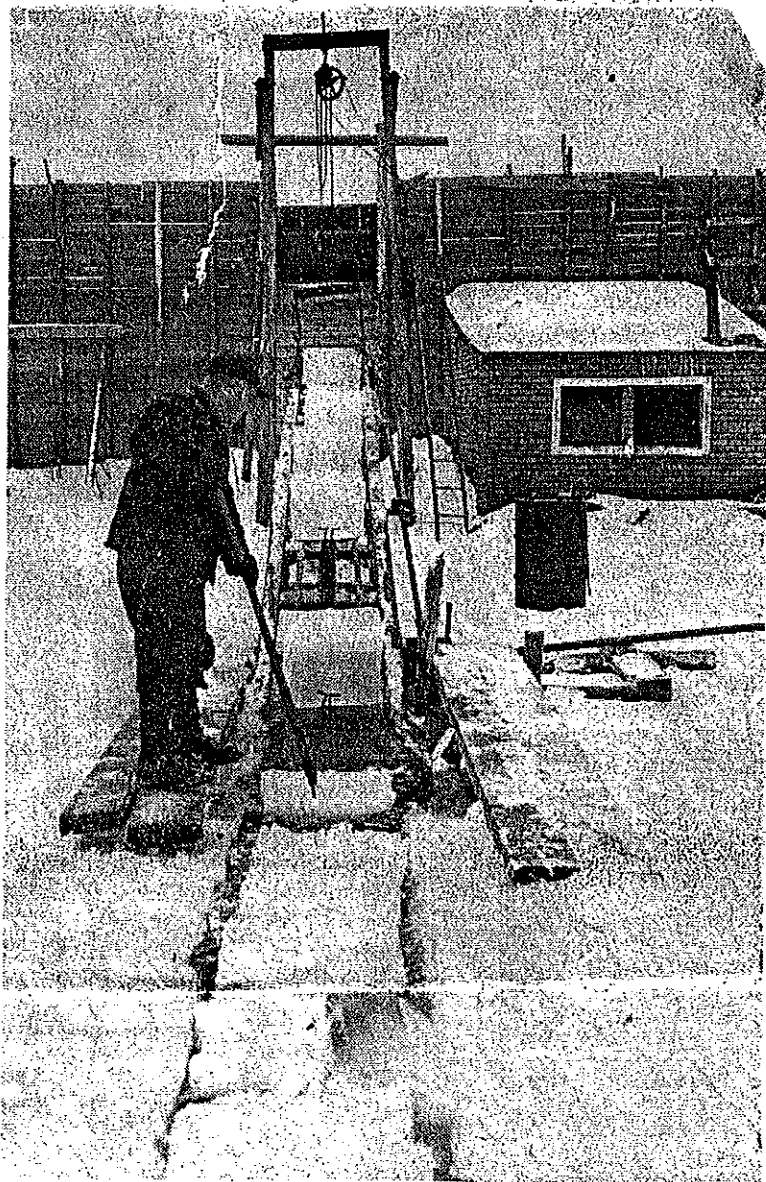
Batterbee's crew plowed about three acres of snow on Round Lake during the winter to keep snow off the ice so it would freeze thicker. Last year his ice was 22 inches thick and he was all done a month ahead of this year—and ice this year was 15 inches thick.

PLOWING IS DONE in circles with a truck. The same truck is used to operate the conveyor. A power ice saw cuts the ice down to the last two inches from where it is hand-sawed or spudded and floated down a channel to the ice house.

ABOUT 200 YARDS of sawdust is used to cover the ice. It is packed on about 12 inches thick on the top and sides. This insulation keeps ice solid throughout the summer.

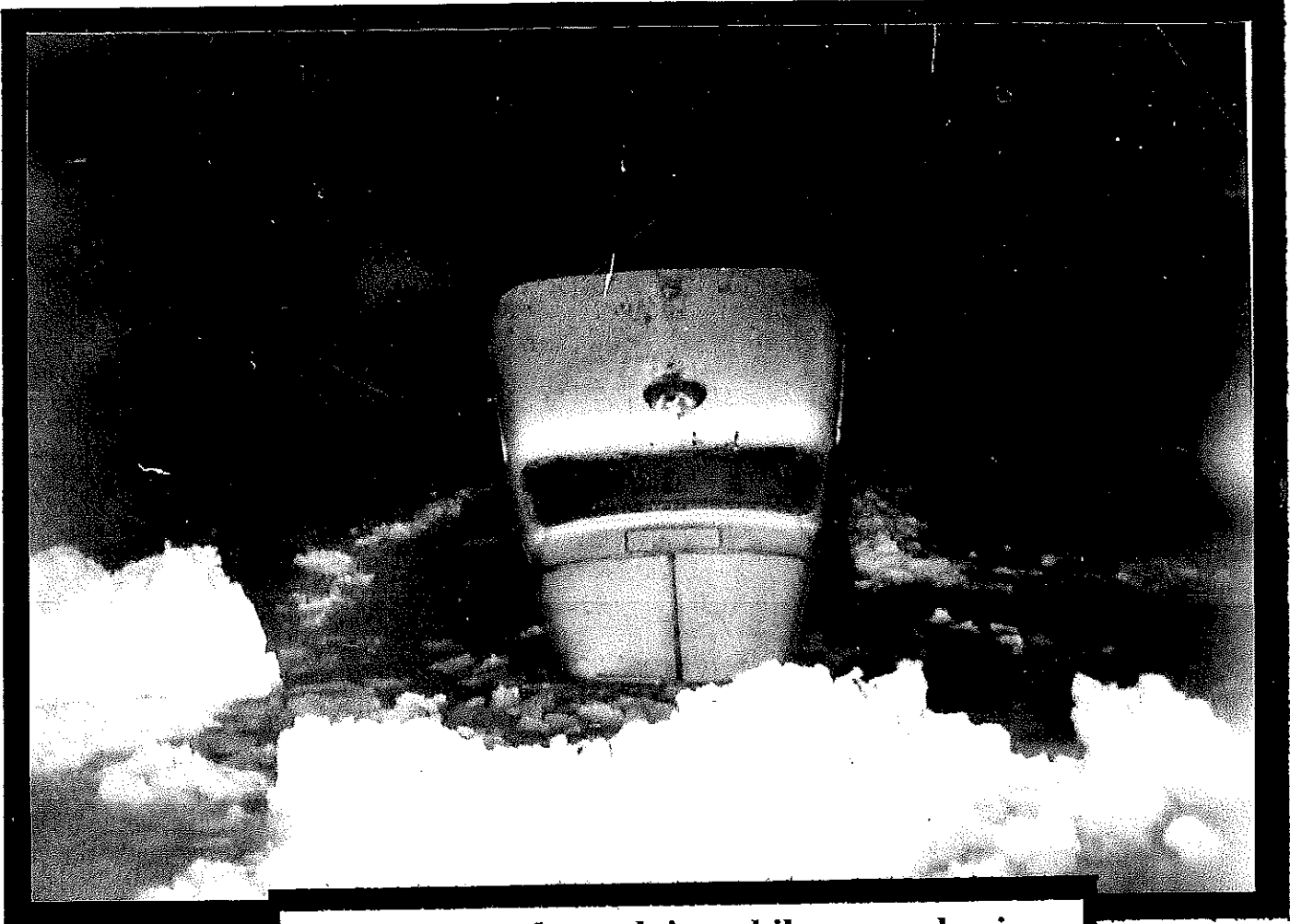
The ice harvest takes between 30 working hours and 12 days, depending on the amount of trouble encountered. It's cold work, at times, as these photographs will testify.

YEARS AGO ice was harvested in nearby Mud Lake, and up to this year at Harbor Springs. This year there wasn't enough ice in the Harbor to make it worthwhile, Batterbee said.



CONVEYOR CARRIES hunks of ice up into the ice house where it is stored after Carl Schmitt uses a pole to push them out of the ice channel. A truck, with a special gear provides the power and does double duty as a snow plow.

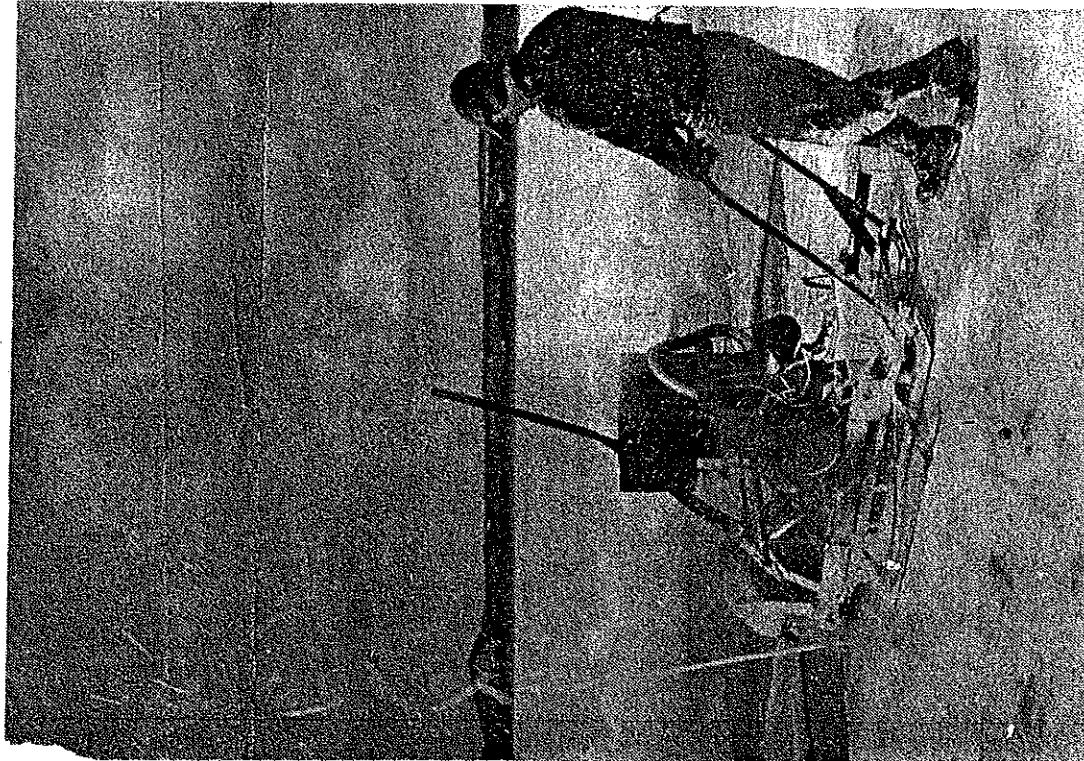
MERCHANTS DELIVERY
Pick-ups and Local Moving
And
BATTERBEE ICE CO.
Home And Commercial
Deliveries
PHONE 3416



Truck went through ice while snow plowing

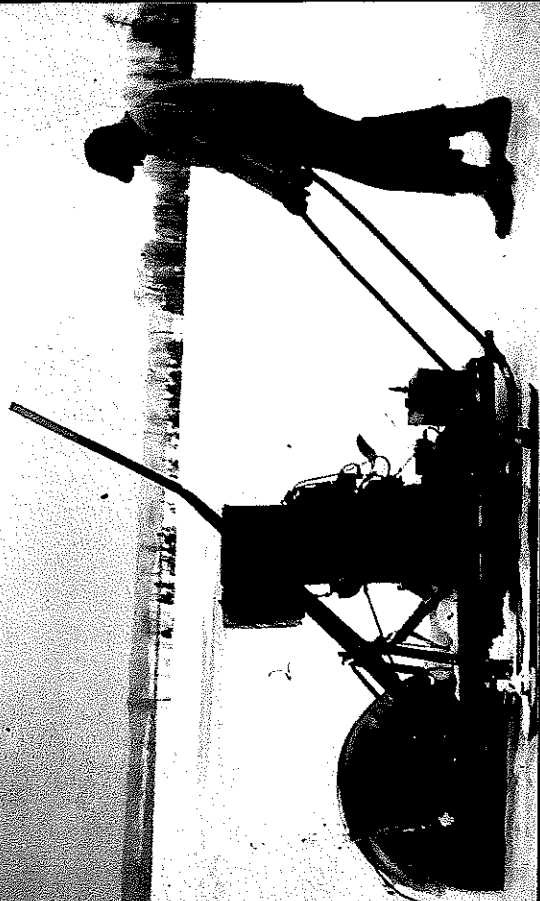


Man and Ice Boxes Still Busy



—Review Photo Engraving
POWER ICE SAW, owned by Batterbee Ice Co., cuts Round Lake ice for use this coming year. Operator is Gerald Fetting. The saw was made in Lansing some years ago. Note pieces of ice flying high in the air as Fetting cuts through.

Art Cardy operating ice cutting saw



Delivery - Ice

BATTERBEE ICE CO.

AND

**MERCHANTS
 DELIVERY SERVICE**

Deliveries Within 50 Miles

Phone 3416 Petoskey

Northern Michigan Review
 Business and Professional Directional

Delivery - Ice
 Thursday, July 10, 1952

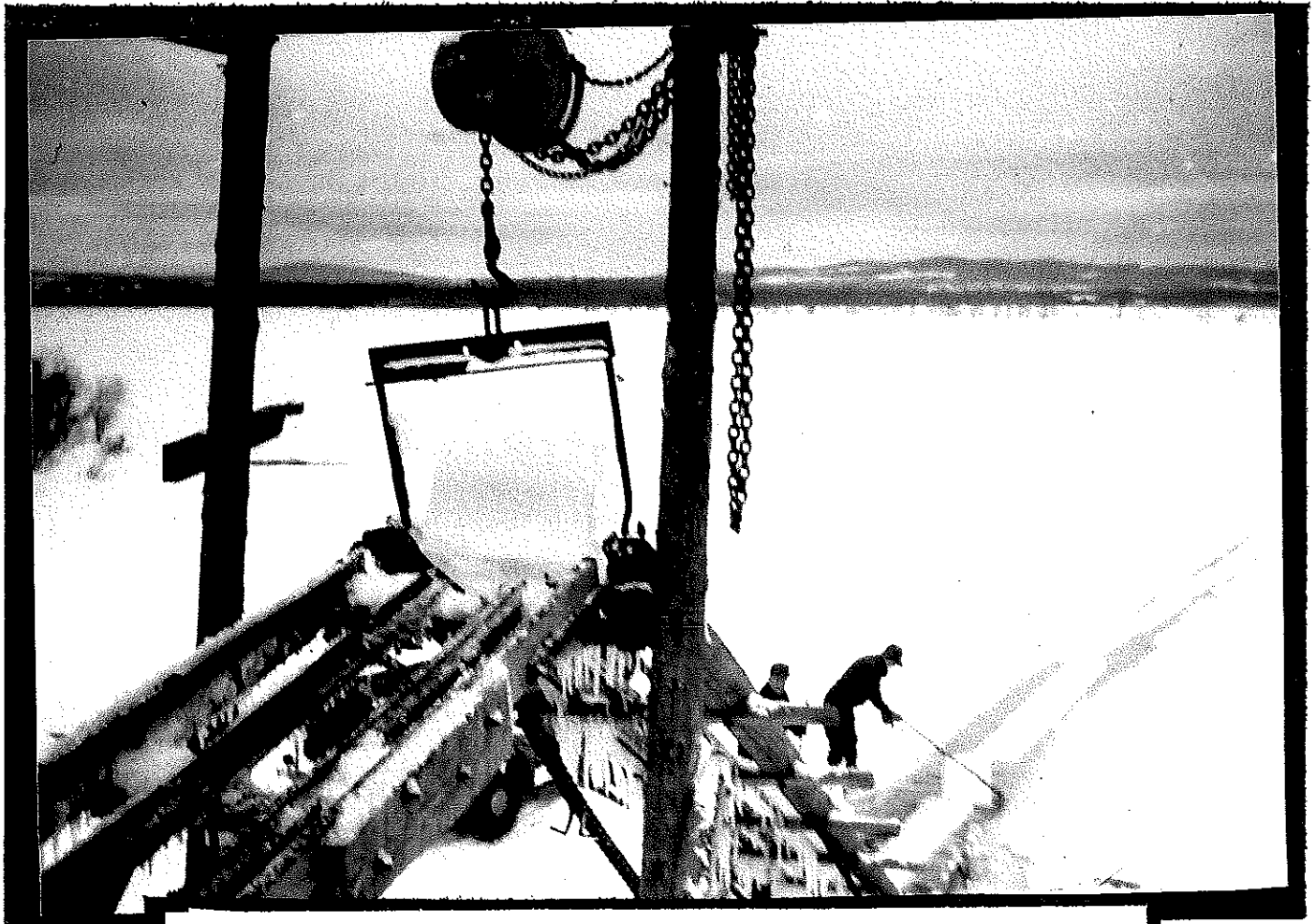


—Review Photo. Engroving

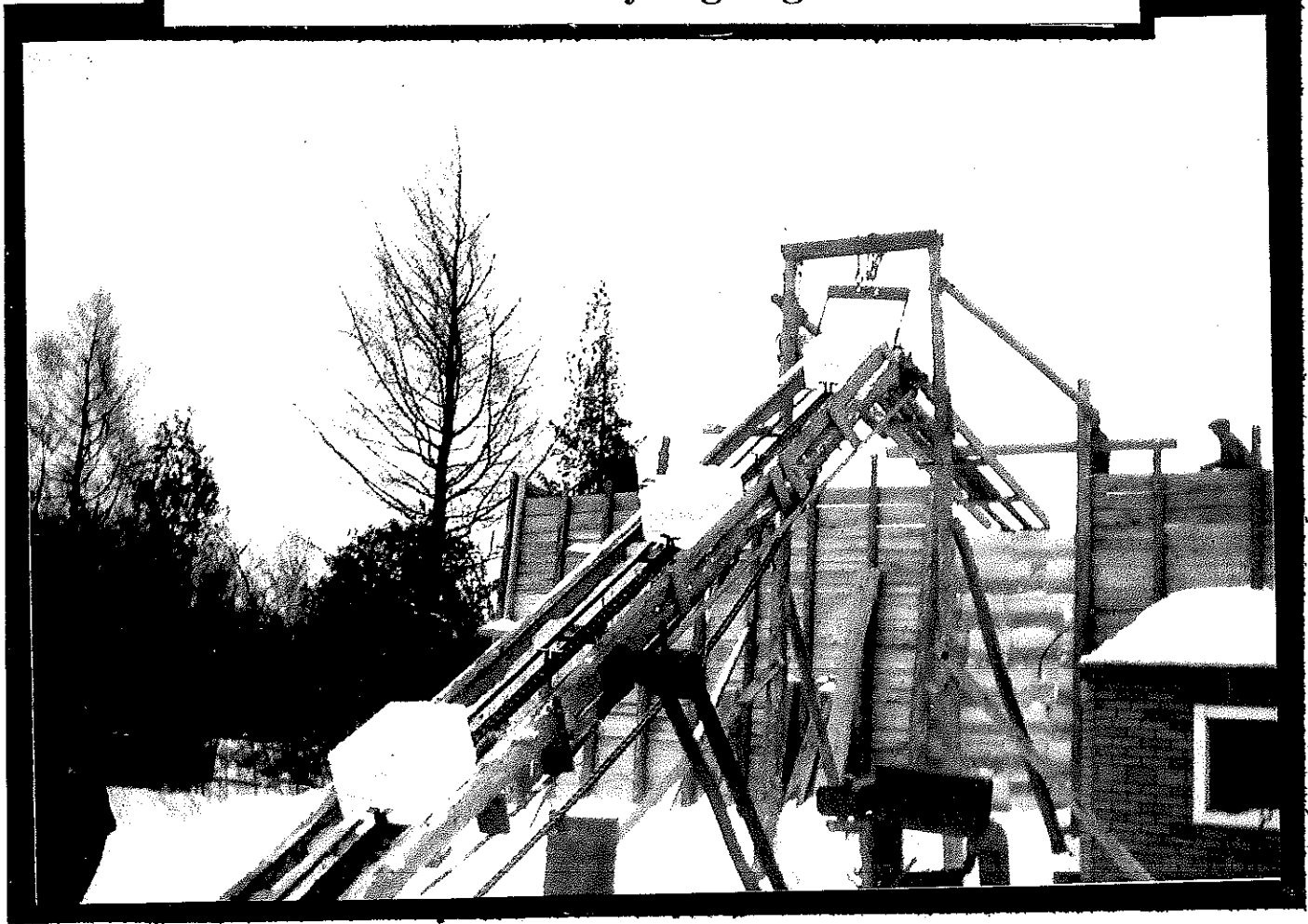
AFTER THE POWER ICE SAW cuts across Round Lake, Richard Johnston spuds them into smaller hunks by cutting through the last couple inches, then sends them floating over the channel cut in the ice to the conveyor. The term is heading, sawing and spudding.

Clair Batterbee & Art Cardy

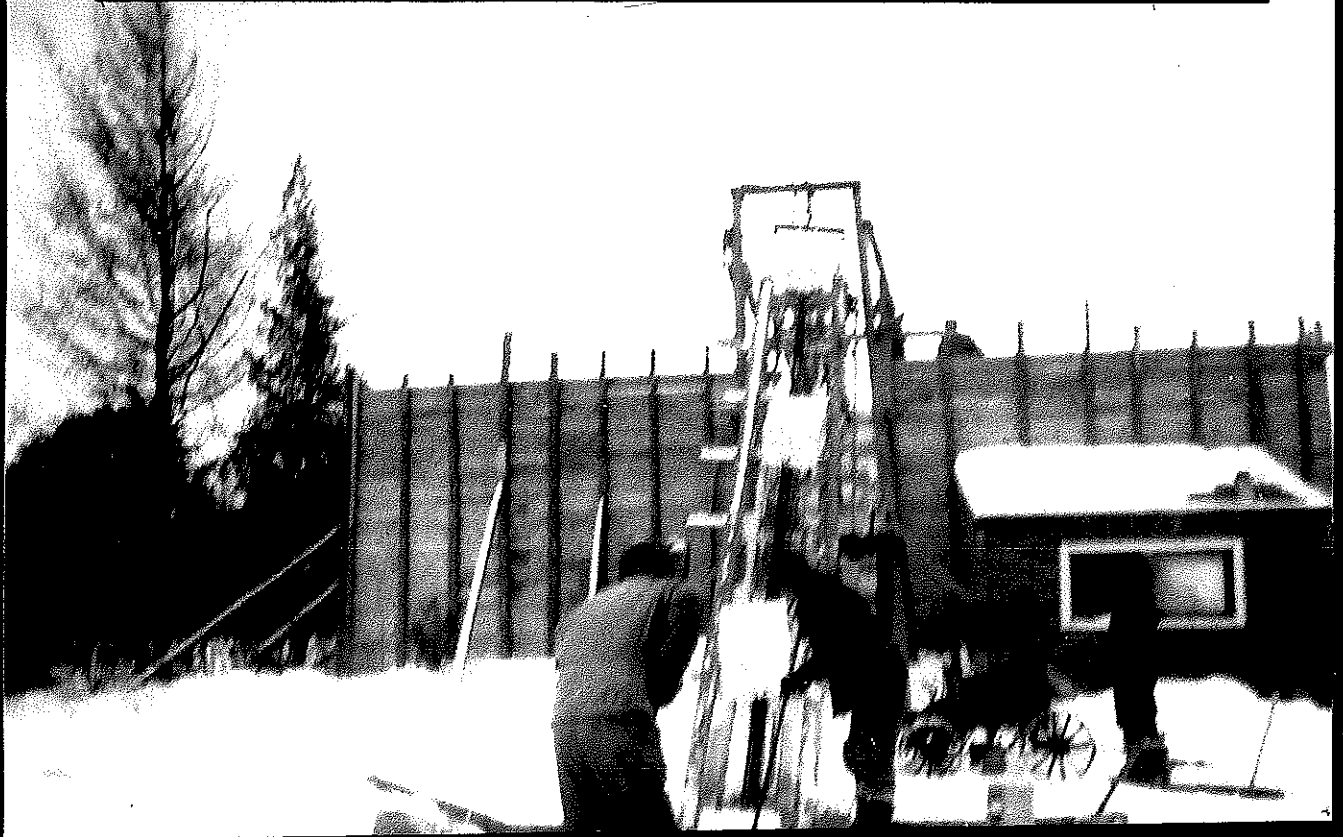




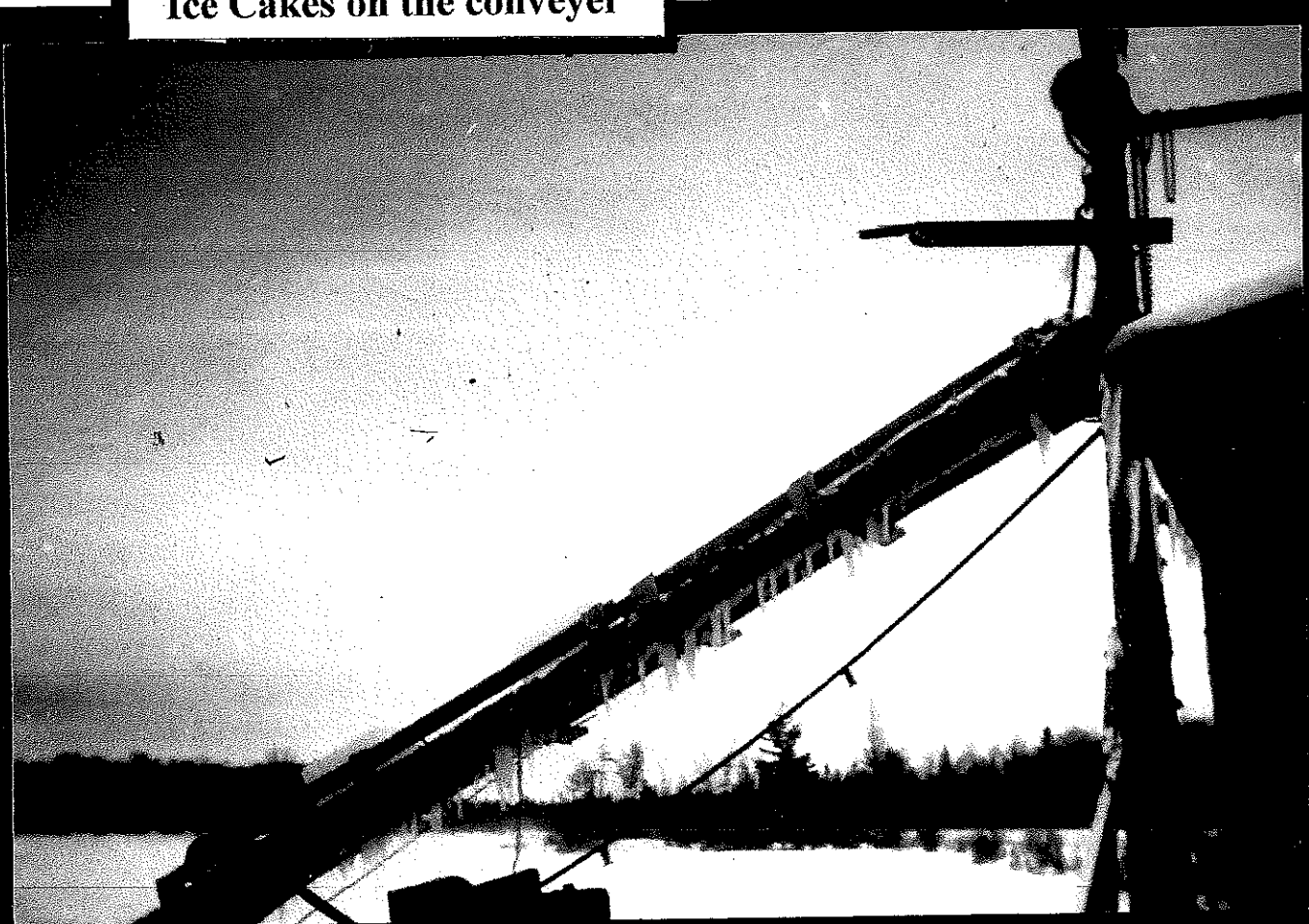
Ice Cakes on Conveyor going into Ice House

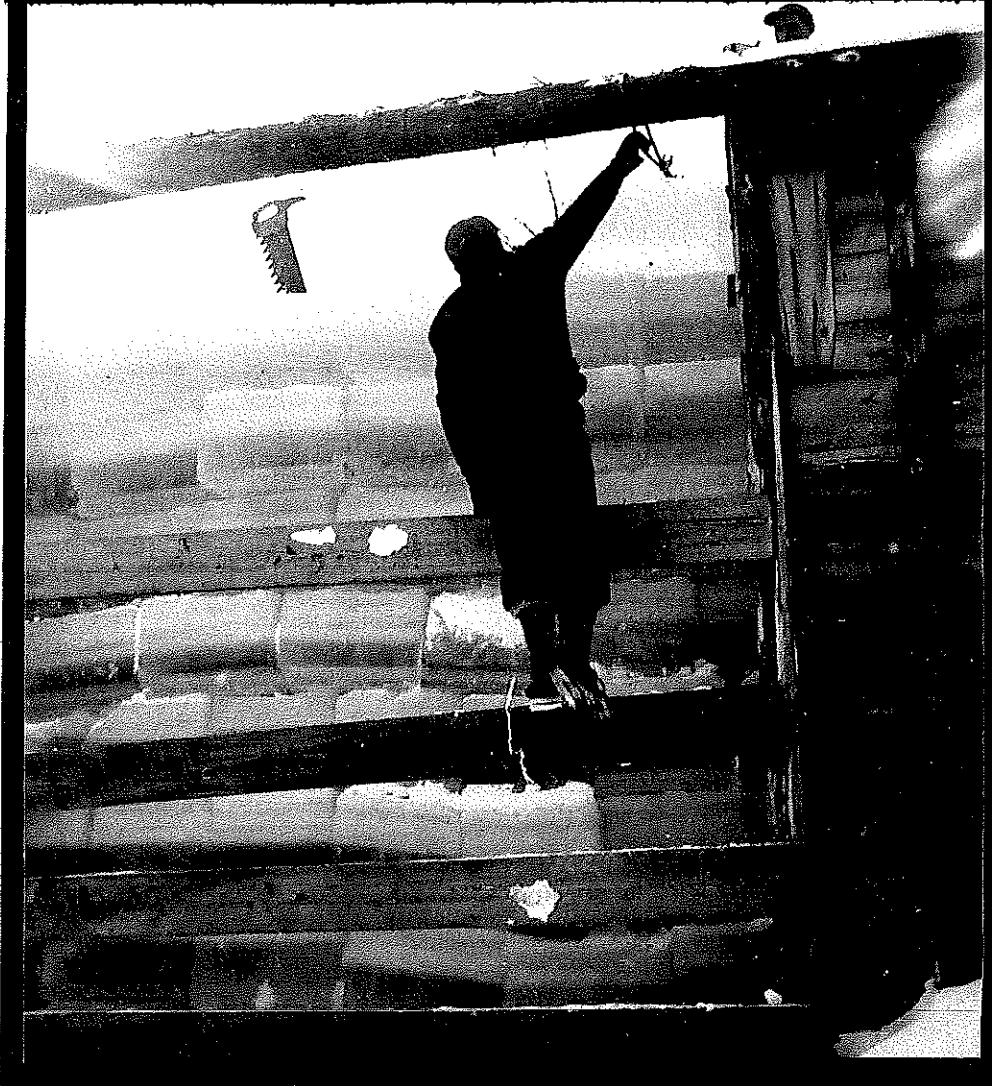


Carl Schmidt & Clair Batterbee feeding ice on the conveyer



Ice Cakes on the conveyer





**Harvested Ice
is piled up, then
covered on the
top and sides
with saw dust
in the ice house
located on the
shore of
Round Lake.**