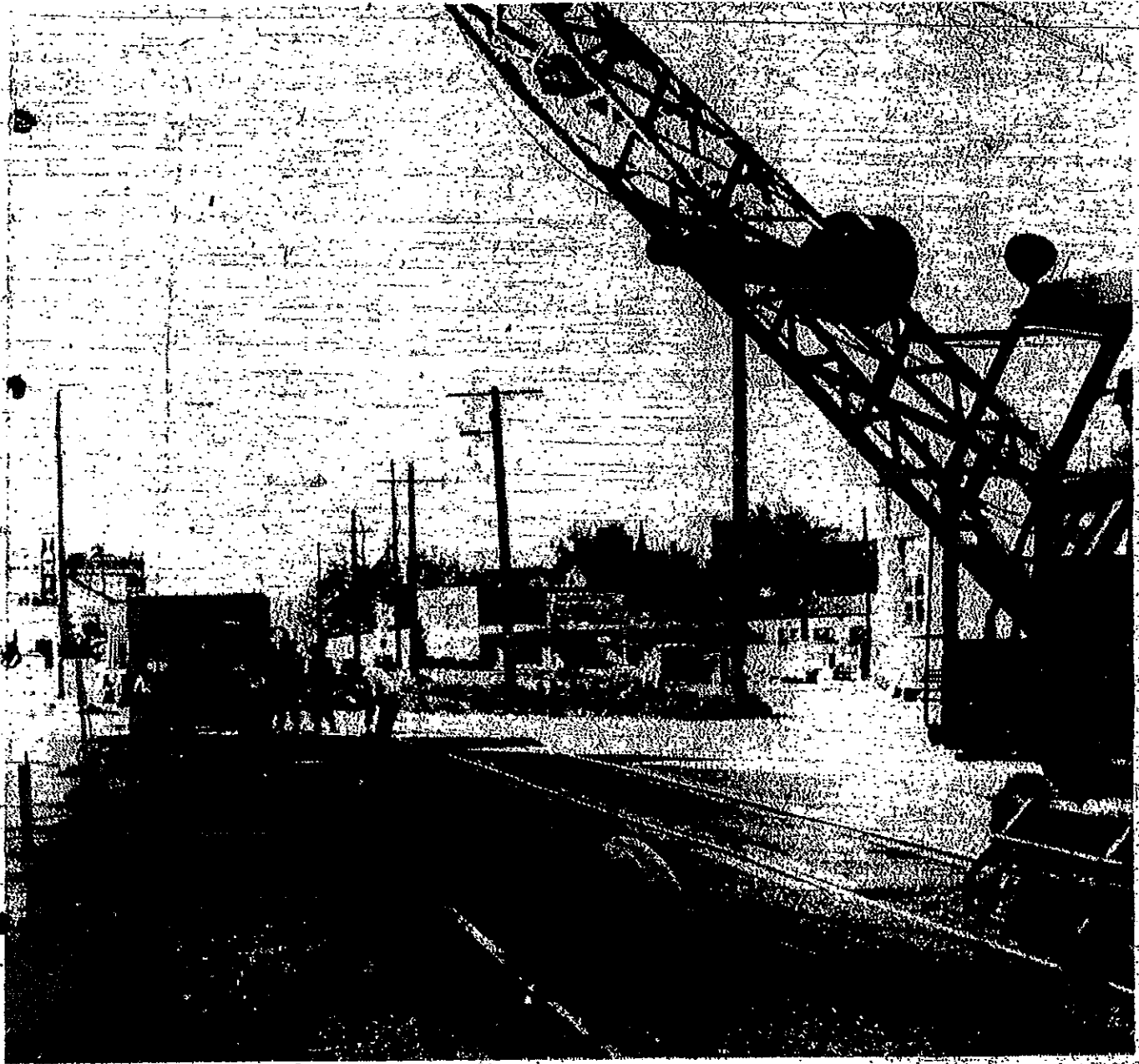


Transportation

**REMOVAL 1960
SUBURBAN RAILROAD TRACKS
THROUGH PETOSKEY BUSINESS SECTION**

REMOVAL OF SUBURBAN RAILROAD TRACKS RUNNING THROUGH BUSINESS SECTION OF PETOSKEY

Petoskey News-Review
October, 26, 1960
Front Page



REMOVE SUBURBAN TRACKS. Work crews from the Pennsylvania Railroad are removing several sections of the old suburban siding tracks this week which run through the business district of the city. The old tracks, no longer used, have been covered with dirt and blacktop and are being taken up for salvage. At the turn of the century these tracks carried an estimated 14 trains daily into the old suburban depot which was located next to the Elks Temple. There will still be two lines of track running through the city with service siding along the way. (News-Review photo by Fred Lovelace)