

**BAY VIEW HOUSE**

**WOODLAND AVENUE**

**BAY VIEW, EMMET COUNTY MICHIGAN**

## **BAY VIEW HOUSE DESTROYED BY FIRE**

### **Flames From Unknown Cause Completely Eat Up This Popular Summer Hotel**

#### **Had Been Closed for Season Saturday at 3, After Another Good Year.**

#### **Loss Placed At \$150,000. Insurance \$50,000**

The most serious and damaging fire in **Northern Michigan** this season occurred Sunday morning when the **Bay View House** was completely destroyed by fire. The hotel, one of the largest and most popular in **Northern Michigan**, has been closed for the season Saturday afternoon at 3, and the last of the employees started for their homes. Sunday morning shortly after 1 o'clock flames were seen eating their way out of the building and within a few minutes had spread to all corners of the place. The loss is placed at **\$150,000** with insurance of about **\$50,000**. **Manager George W. Childs** said Sunday that the place would be re-built.

Passers along **U.S. 31**, which is **Woodland Avenue** through **Bay View**, at midnight Saturday, noticed no signs of fire, but within two hours the place was a roaring furnace. Early arrivals on the scene, expressed the belief that the flames started along the north side of the building, probably in the basement part. The house was closed tight, with shutters on the windows and the doors locked. It is likely, firemen point out, that the fire smoldered for an hour or two, slowly spreading over the building, but not bursting into high flames, because of lack of air.

Once the flames had forced their way to the outside there seemed to be one big puff and flames were burning fiercely everywhere. The **Petoskey City Fire Department** brought all of its equipment into play, and the full force of the **Petoskey** city water system was turned into the **Bay View** mains by Superintendent **Charles Ditto**. There was nothing they could do toward halting the fire in the hotel as it had such great headway in the dry, wooden structure. The firemen however staged what watchers termed a beautiful and very successful battle to save adjoining property. **Manager Childs** said Sunday that he considered their efforts highly successful and extended his congratulations for their fine work.

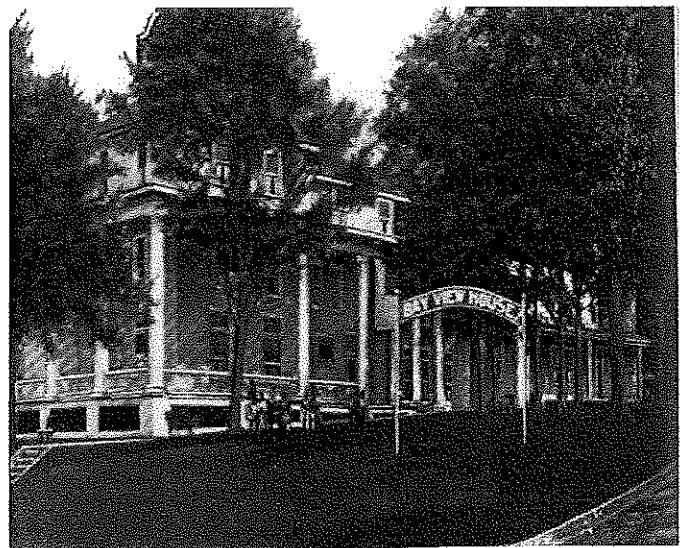
Fire brands were carried by the light breeze and heat to all parts of the front part of the **Bay View** grounds, dropping on roofs and the firemen and volunteers were busy extinguishing these and other small fires. The weather conditions were favorable to **Bay View**, the rain

having dampened roofs and yards.

The hotel was under the joint management of **George W. Childs** and his sister, **Mrs. E. L. Irish**. **Mrs. Irish** and **Mr. Irish** had moved their personal things to their apartment at the **Nellie Gray** home on **Division Street** Saturday and in the late afternoon **Mr. and Mrs. Childs** had gone to the **Perry** to stay until Sunday. The books from the hotel had been sent, as had long been the custom to the **Childs** home at **Anderson, Indiana**. The personal clothing and effects of the management and the books were all that was saved from the hotel.

{Continued from page one}

The loss included the hotel proper, the **Luella Cottage**, adjoining and operated as an annex to the hotel, the **Bay View Restaurant** and **Barber Shop**, in the hotel building. The other cottages close by were scorched by the heat but saved from the hungry flames by the splendid efforts of the **Petoskey Fire Department**.



**Bay View Hotel, circa 1914**

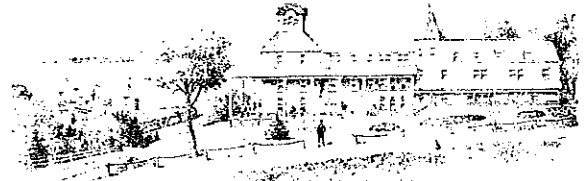
The hotel was completely furnished and in the very best of physical condition. Every department was kept constantly up in a high peak of efficiency in both equipment and in care. Every board and porch part were kept well painted and every worn board was replaced. Rooms, dining room, kitchen, laundry, lobby, etc., were improved every season with new and modern equipment.

**BAY VIEW HOUSE DESTROYED BY FIRE**  
**Flames From Unknown Cause Completely Eat Up This Popular Summer Hotel**  
**Had Been Closed for Season Saturday at 3, After Another Good Year.**  
**Loss Placed At \$150,000. Insurance \$50,000**

It was popular and guests returned year after year, among those leaving as the hotel closed being many here for their thirtieth season.

The hotel was first established in 1876 by the **Bay View Camp Ground Association**. The next season it was leased to **George W. Childs, Sr.**, and operated for some years by him. It was enlarged a number of times, first by the **association** and later by **Mr. Childs** after he had purchased it. After the death of **Mr. Childs** the hotel was operated by **George W. Childs** the son, and **Mrs. E. L. Irish**, a daughter. For many years and until the new post office building was erected five years the hotel housed the **Bay View Post Office** and the proprietor was the postmaster. The office remained in the family until the new building was completed and the office placed under the control of **Postmaster C.J. Gray**, of **Petoskey**. It was the headquarters of those early pioneer summer folk who founded **Bay View** and started it on its way so successfully. It is said that the hotel never had a poor season, always doing a profitable business.

scattered about, matches all cleaned up, candles used at times, packed away, the boilers and water pipes drained, the electric switches pulled open, the dining room and kitchen equipment placed in position for the winter, doors all locked and windows covered. It was said this work was the most complete and painstaking from a fire safety standpoint in history of the structure.



*Hotel is surrounded by an abundance of trees not put in by the sketched.*

**BAY VIEW HOUSE,**

GEO. W. CHILDS, Propr. • BAY VIEW, MICH.

ELECTRIC LIGHT, ELECTRIC CALL BELLS, FINE LOCATION.  
 Near Depot, Boat Landing, and Assembly Grounds.

Rates, \$2 per day. Table Board, \$6 per week. Room and Board, \$10 to \$14 per week  
 AN EXCELLENT BREAKFAST in connection with the house will furnish fresh goods of the best quality daily.

Telephone, Telegraph, and Post-office in connection with house. Porter at all trains.

Bay View House.



**The Original Bay View House**

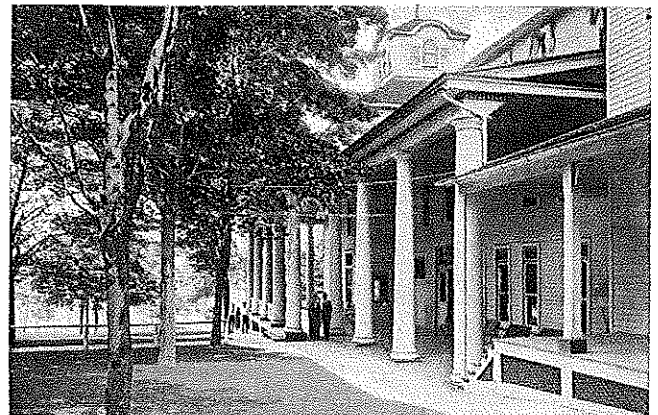
It was a three story, wooden structure, as was also the **Luella Cottage**. The lumber and timbers were of the finest, and had been carefully preserved with use of paints and oils.

In closing the hotel this year the work had been done room by room. The linens and bedding of each guest room had been carefully cleaned and packed away, and each bed covered, Poisons for rats and mice had been

**May Have Clue to Fire**

A possible origin for the fire came to light when the green cottage on the northeast side of the hotel was found to have been entered through a kitchen window. Investigation developed that a window had been smashed and the latch on a door raised. Representatives of the sheriff's department have endeavored to secure finger prints, matches on the floor and finger prints being the only clues that have been discovered.

Extracted Petoskey Evening News Monday, September 30, 1929.



A28—BAY VIEW HOTEL OVERLOOKING LITTLE TRAVERSE BAY, MICH.