

PICTURES AND POST CARDS
Of Past Era of
Petoskey, Emmet County, Michigan
613 East Mitchell Street

PETOSKEY, EMMET COUNTY, MICHIGAN

Main Street 1880

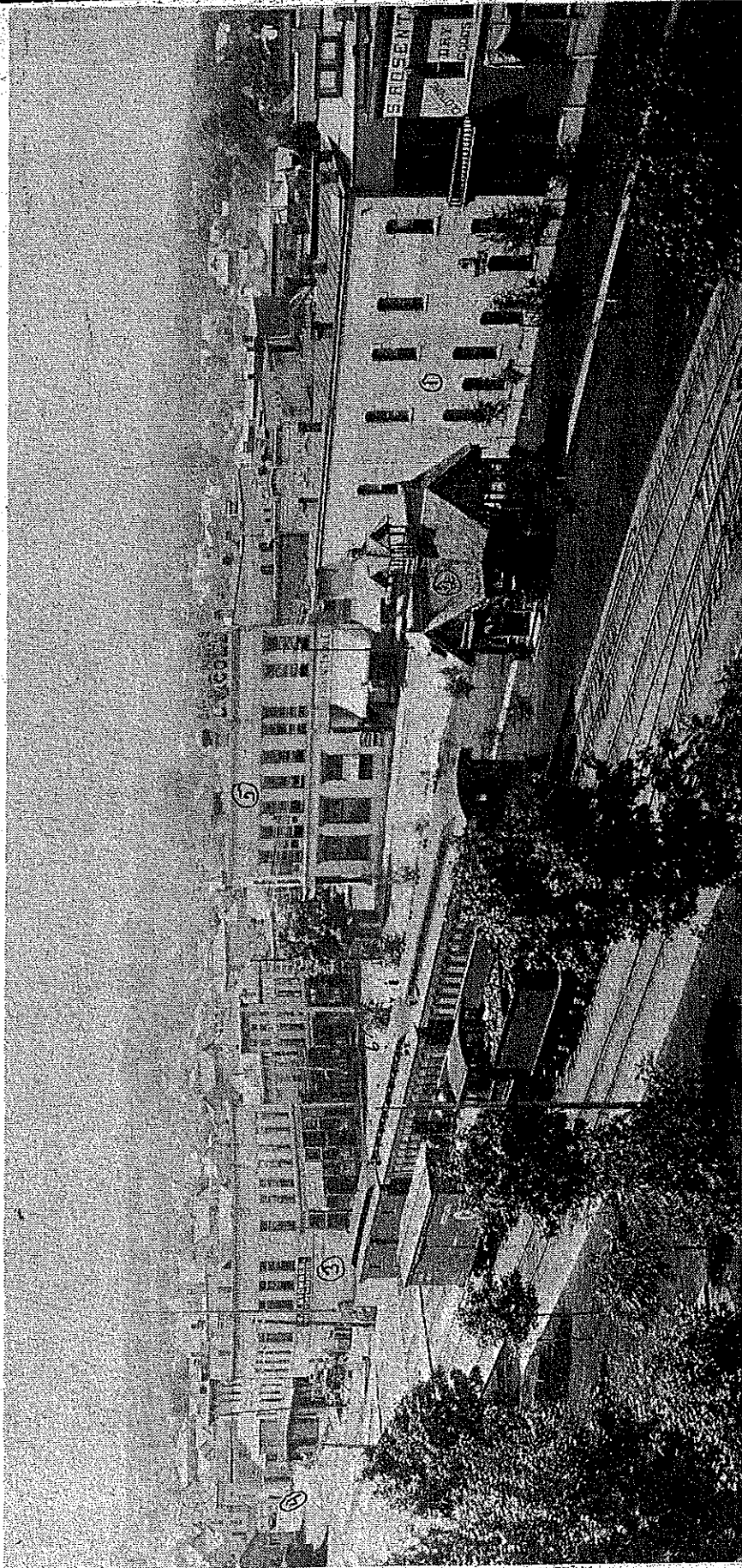


Petoskey

P-12

*MITCHELL STREET
PETOSKEY, EMMET COUNTY, MICHIGAN
CIRCA 1920*



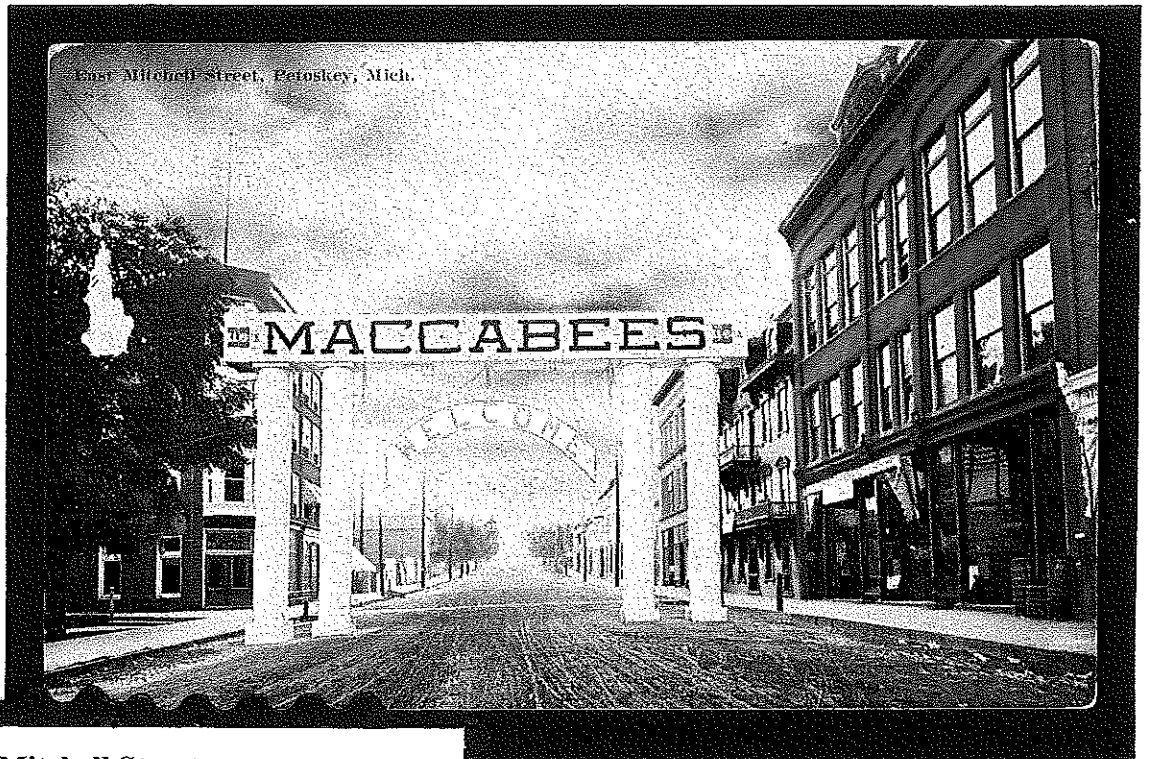


PETOSKEY--in the Gay 90's with the main corner of Howard and Mitchell-st. and the Grand Rapids & Indiana Railroad Park running along Park-ave. and the "Flatiron". There were no traffic lights or autos, boardwalks, dummies running to Harbor Springs, the railroad "summer house" and long-gone businesses, W.W. Mc-Comber, Furniture & Crockery, (where Fay's is today) was having a going out of business sale. Where the Michigan-st. parking lot is now was a joiner shop. L.W. Cole--drugs, wallpaper, toys and fishing tackle was located where the First National Bank is today. Another "furniture and crockery" business has an 1881 date below the cornice. At the right is S. Rosenthal's "clothing and dry goods". On Mitchell-st. was "The Grocer", "Palace Bakery & Grocery" and "Palace Meat Market & Oysters."



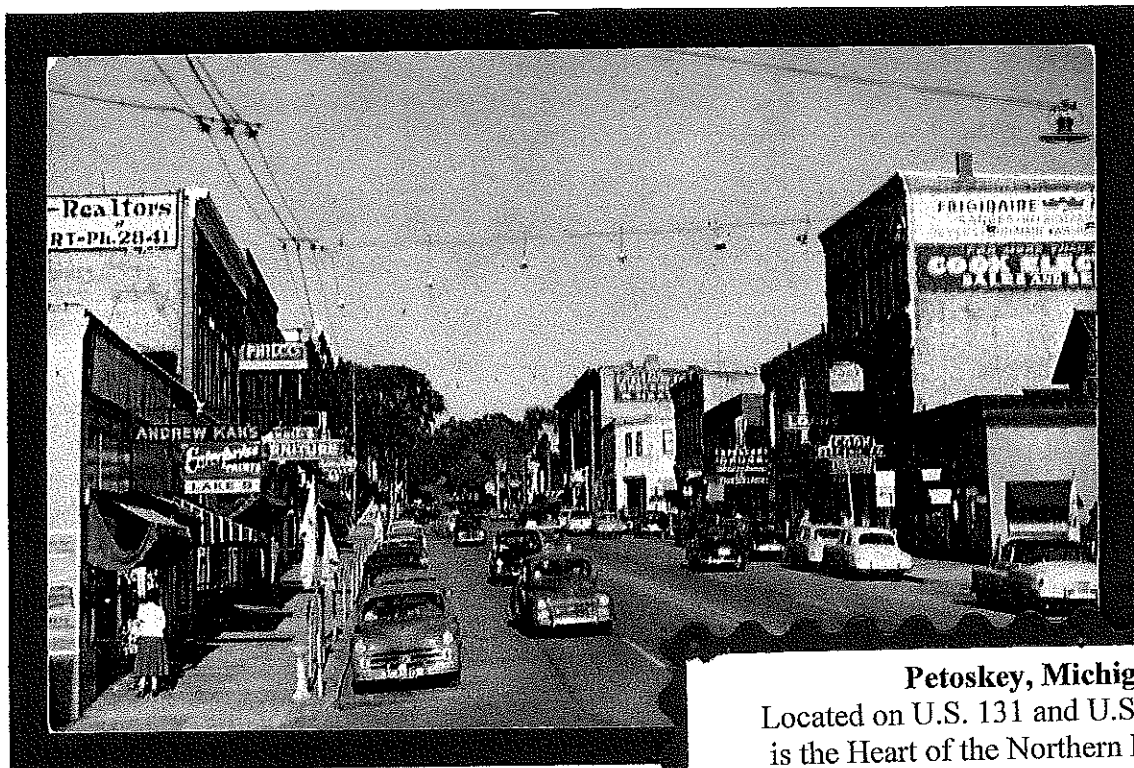
300 Block, Mitchell Street, Petoskey, Emmet County, Michigan

POST CARDS



**East Mitchell Street
Petoskey, Mich.**

Published by Will P. Canaan Co.,
Grand Rapids, Mich.
Dated July 1, 1909

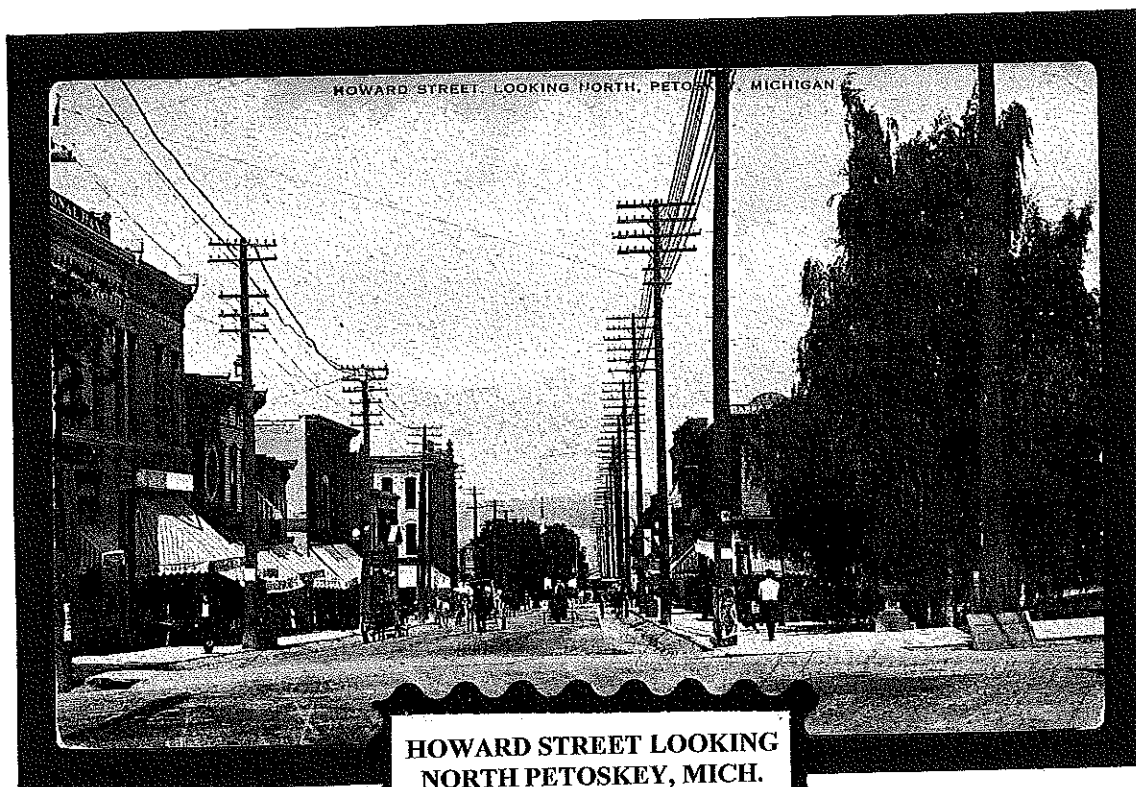


Petoskey, Michigan

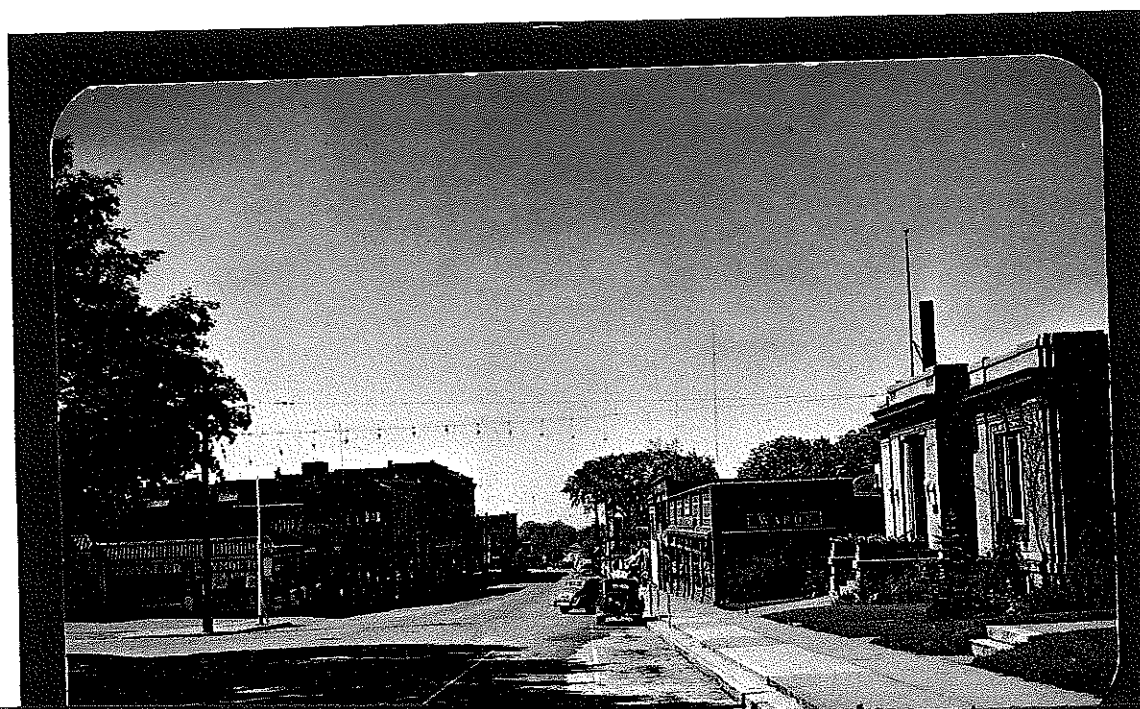
Located on U.S. 131 and U.S. 31, Petoskey is the Heart of the Northern Michigan Resort Area, with facilities unexcelled anywhere.

Mitchell Street Business District
Published by Postachrome Co., Charlevoix, Mich.
{No Date}

POST CARDS



**HOWARD STREET LOOKING
NORTH PETOSKEY, MICH.**
Alton G. Cook Publisher
Petoskey, Mich.
No date, No postage



**EAST MITCHELL STREET
BUSINESS SECTION
PETOSKEY, MICHIGAN**
Public Library appears at
right foreground.

**Published by Petoskey Cigar Co.
Petoskey, Michigan
No date, No postage**

PETOSKEY, EMMET COUNTY, MICHIGAN

Howard Street 1920



Petoskey

P-6

Lake Street



P-7

OUR HISTORY
*Extracted Petoskey News-Review Supplement
Generations*



October 4
2005
Petoskey
mi.

This picture shows Lake Street looking west from the railroad crossing in Petoskey in 1885.



Lake St.
400 Block
Petoskey
mi.

OUR HISTORY
Extracted Petoskey News-Review Supplement
Generations

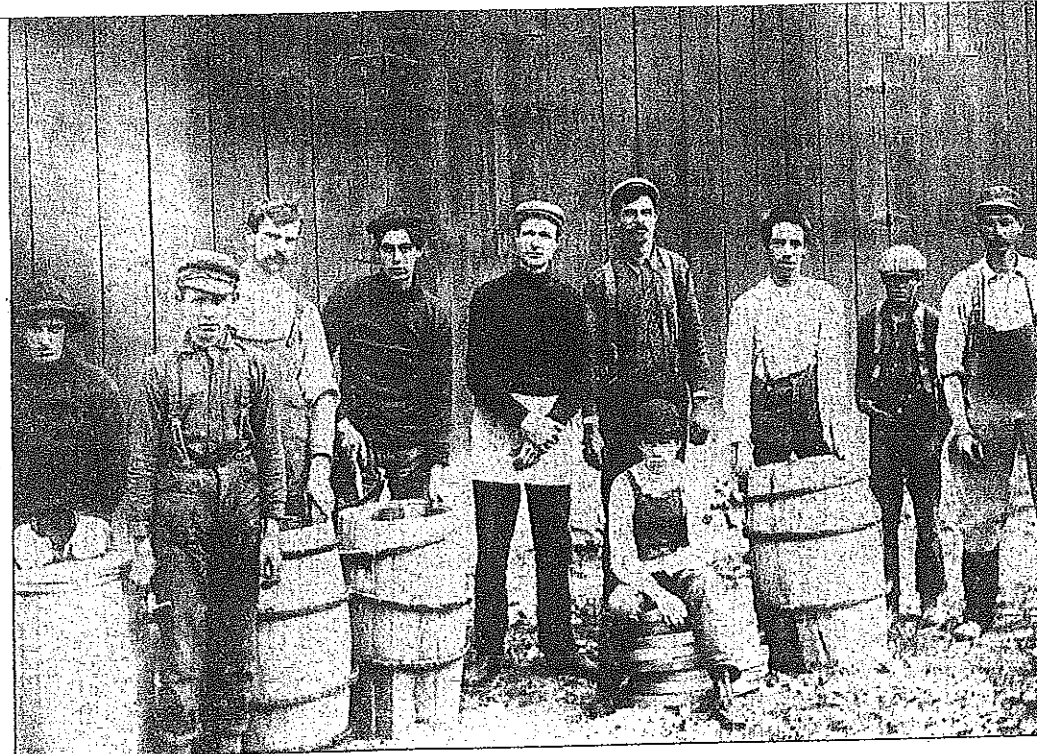


Sept. 5
2006

FILE PHOTO/NEWS-REVIEW

Is this a posse or just a group of men showing off their horses? While we have no information detailing this pic-

ture from the files of the Petoskey News-Review, it is a nice picture from a time long past in Northern Michigan.



OCTOBER 2,
2006

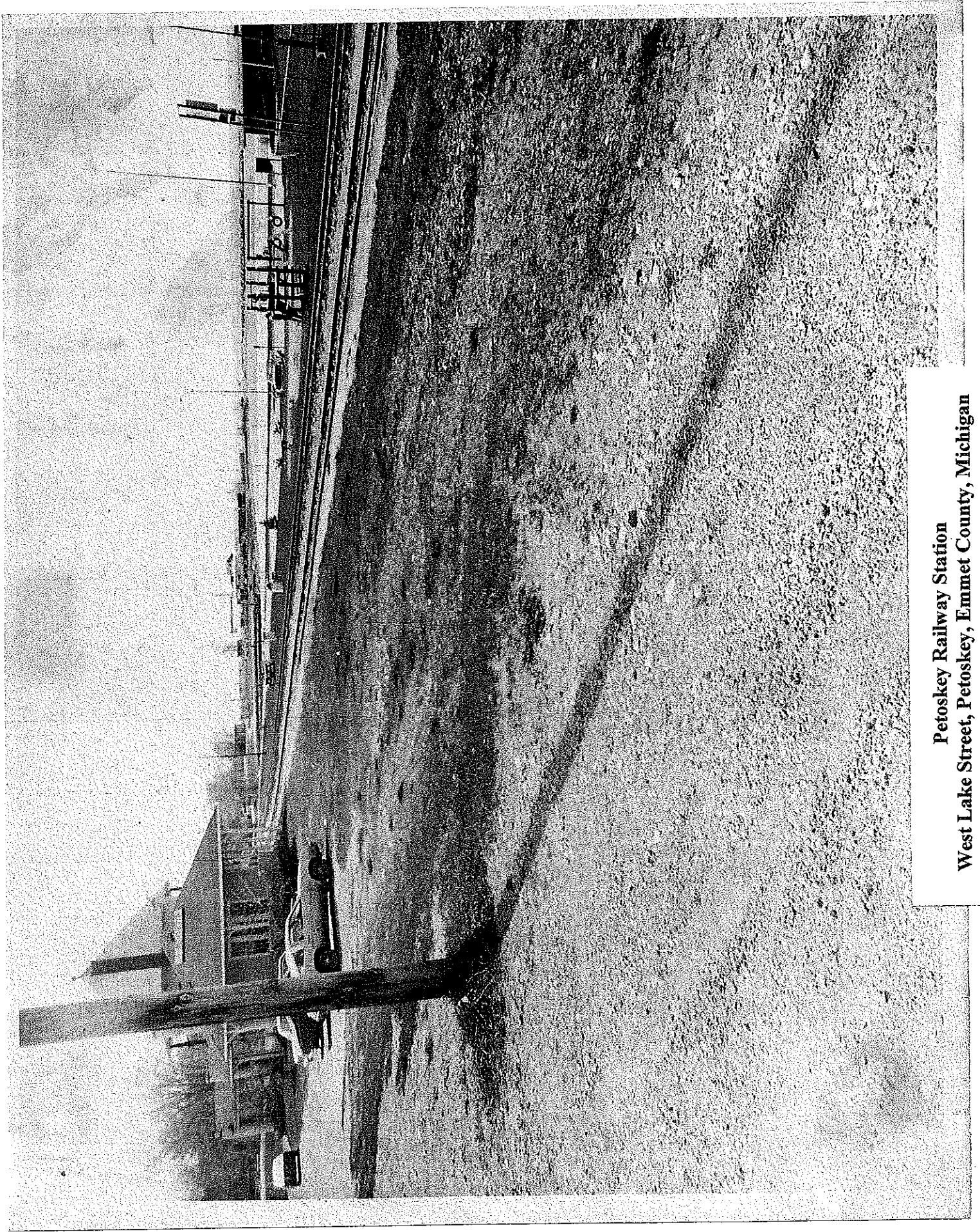
This undated photo from the files of the Petoskey News-Review shows coopers working at Bay Shore.

Petoskey, Emmet County, Michigan



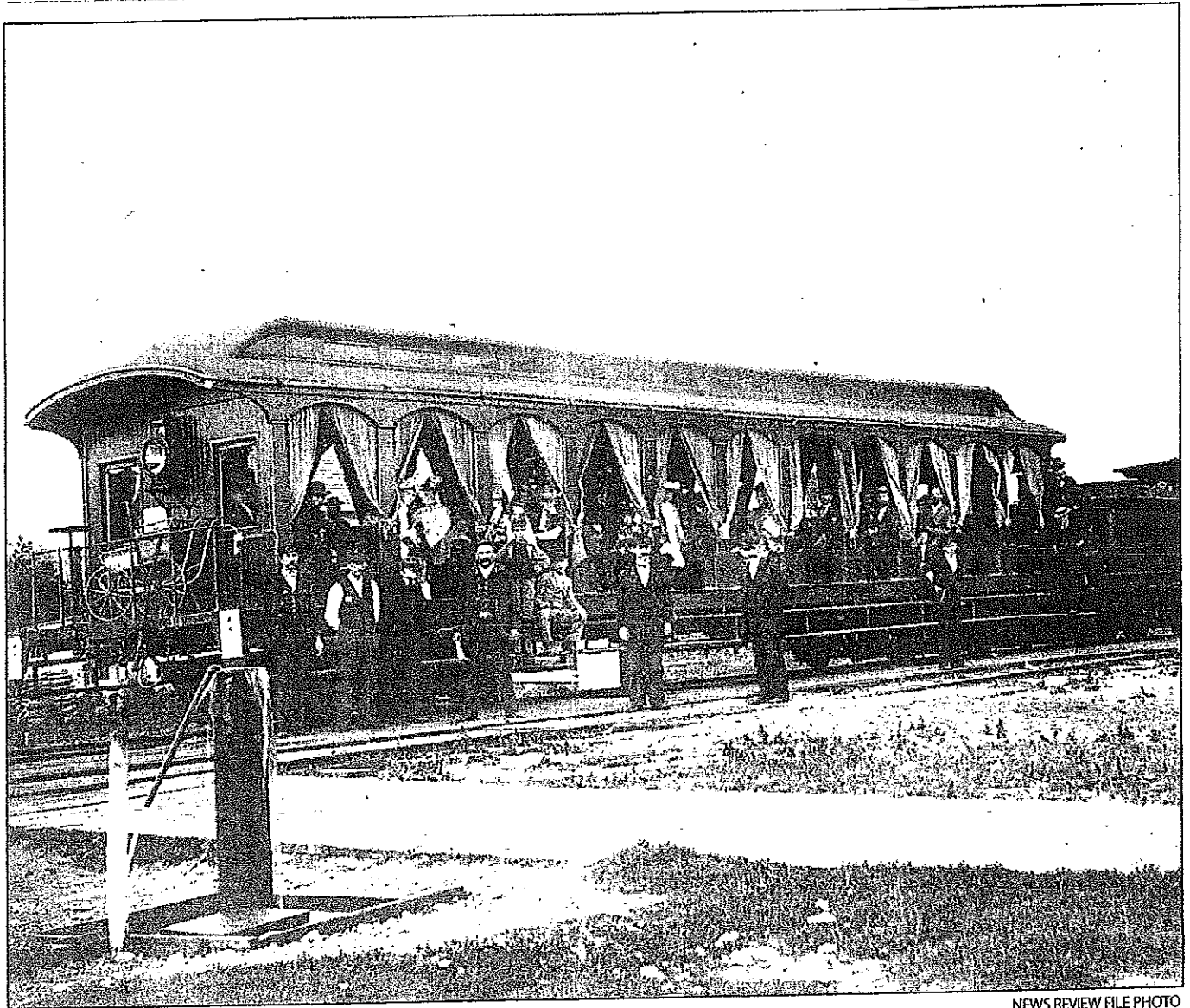
FILE PHOTO

This photo, from a postcard dated Sept. 14, 1913, shows some area workers taking a break from their duties.
Extracted Petoskey News-Review March 6, 2007



**Petoskey Railway Station
West Lake Street, Petoskey, Emmet County, Michigan**

OUR HISTORY
Extracted Petoskey News-Review Supplement
Generations
June 22, 2005

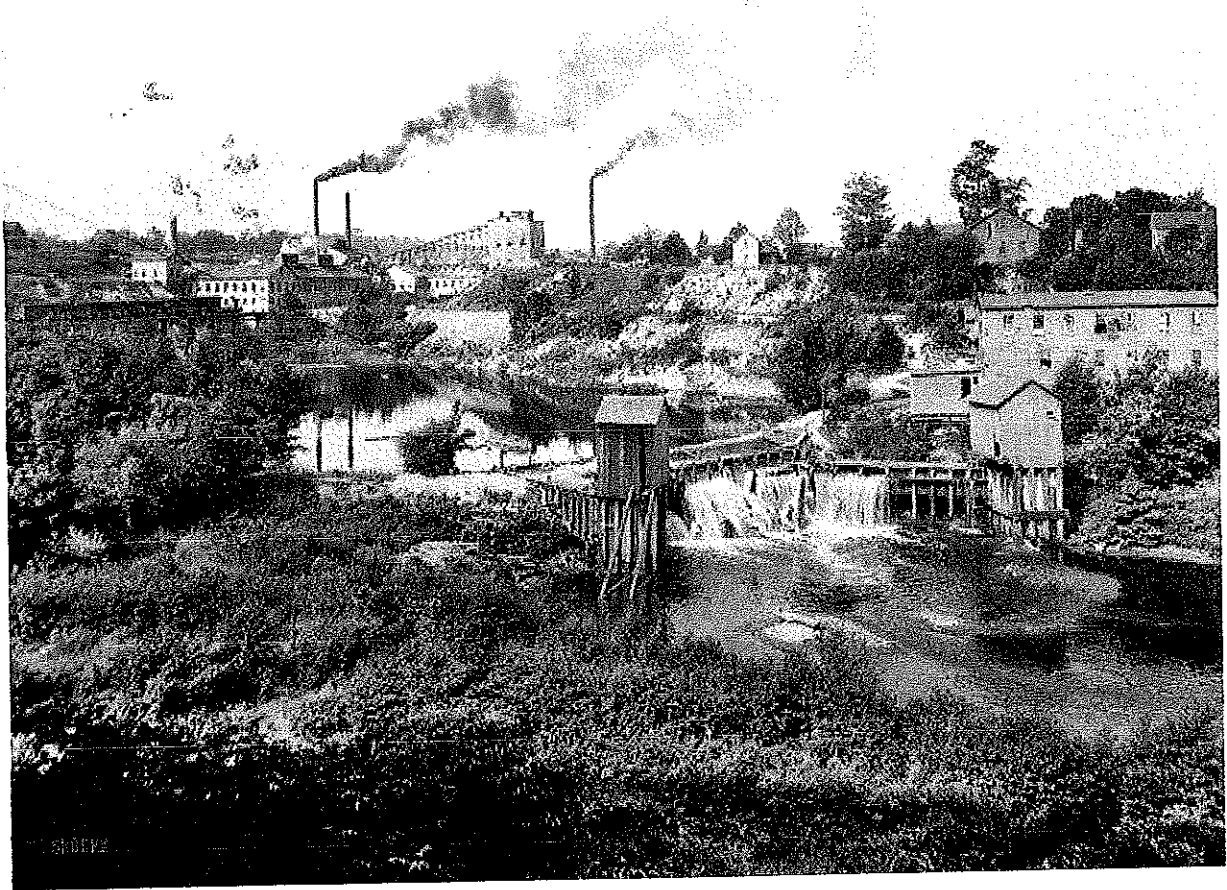


NEWS REVIEW FILE PHOTO

All aboard

This picture shows a passenger car on a train that traveled the Petoskey Open Trail in Oden around the

year 1900. In it you can see the various clothing styles from the past, for both men and women.



*Paper mills around the Bear River, circa 1908
Today the area photographed above is near Petoskey's City Hall/Fire station
At the mouth of the Bear River where it empties into Lake Michigan.*