

**EMMET ROADSIDE PARK
ROTARY PARK**

US-131 Near Petoskey, Michigan

EMMET ROADSIDE PARK ROTARY PARK

Northern Michigan Review
June 19, 1952

EMMET ROADSIDE PARK

Chemical toilet facilities are to be added in Rotary Park and to the park west of the Washout in line with an expansion of roadside park facilities. Emmet Road Commission Engineer-Manager Walter O. Dow revealed

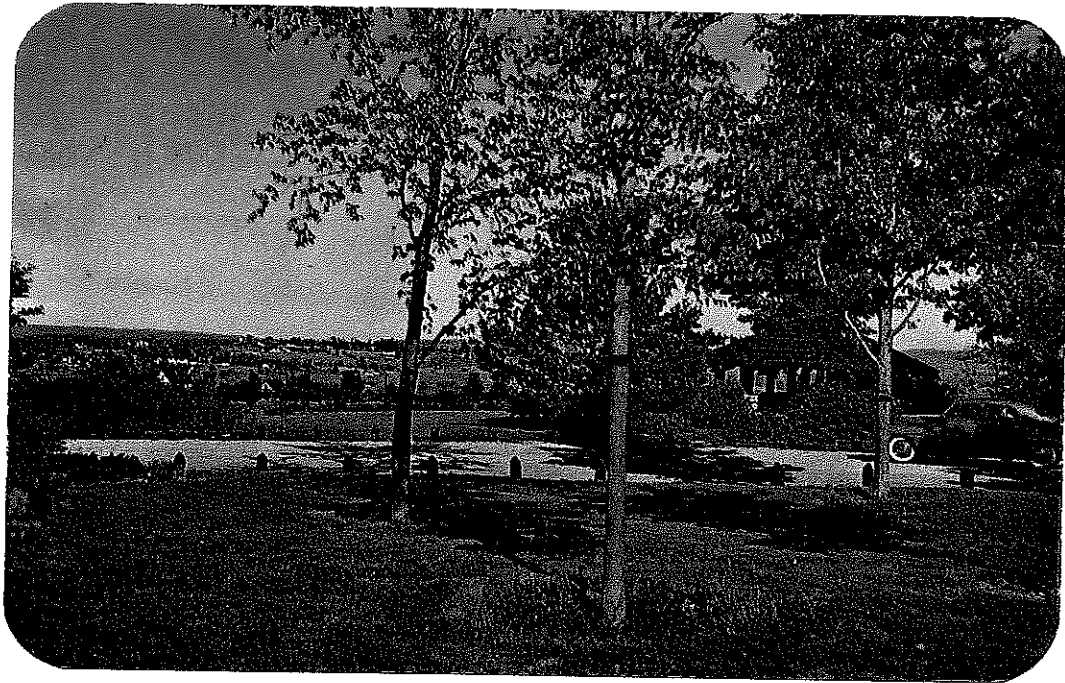
Similar toilet facilities were added at Harbor Springs in 1951.

A well is being driven and a large sign erected at Rotary Park in cooperation with the Petoskey Rotary Club and the State Highway Department with most of the work being furnished by the Emmet Commission.

During 1951, the state repaid Emmet \$9,241.62 for maintenance of the six roadside parks and the numerous areas where 62 tables and 13 outdoor stoves are located. Fifty cords of wood must be split each year for the stoves, most of it coming from dead trees and tree trimming.

In summer months, two men spend two full days a week taking care of these parks, and during the holiday weekends, the men must work every day. The county has four power lawn mowers and a power sweeper to keep grass cut.

"WE HAVE ROADSIDE areas for people to stop and eat their lunch on the Shore Drive and all trunklines," Dow said, "and it would be a good idea for people to remember with many visitors coming this summer. We maintain tables and stoves at the following parks: Rotary, Washout, Conway, Harbor Springs and two at Oden. Lookout Park south of Petoskey has no tables."



Postcard No Date
Published by the Petoskey Cigar Co., Petoskey, Mich.

Scenic Turnout and picnic area on US-131, near Petoskey, Michigan
provides visits of loveliness for visitors.

City is seen in background.

Kodochrome by Lane