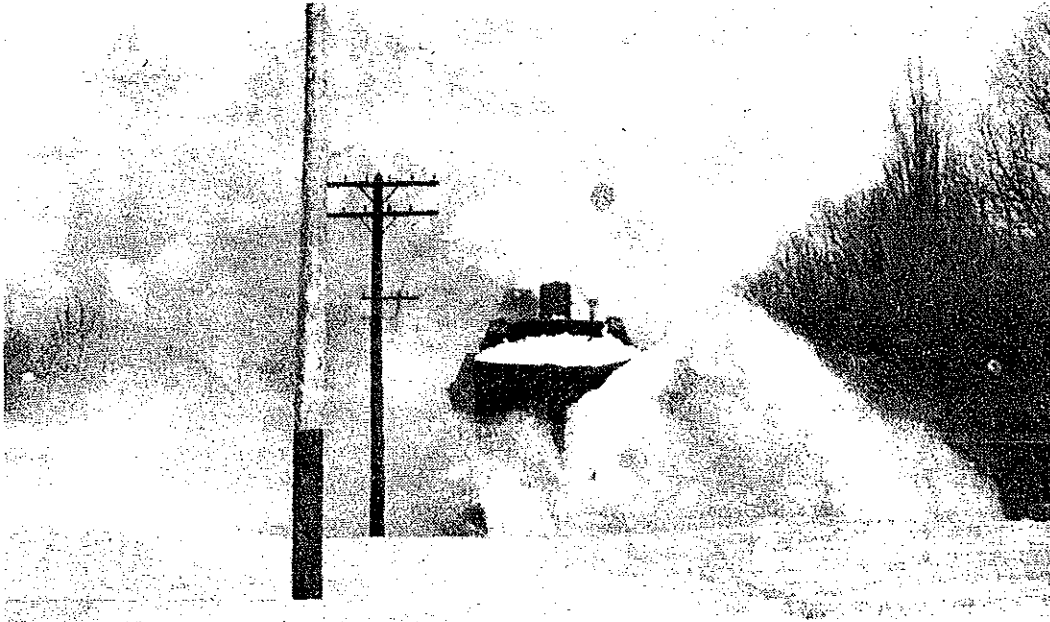


THIS & THAT
WE-QUE-TON-SING

WEQUETONSING, EMMET COUNTY, MICHIGAN

Petoskey News-Review
Friday, February 4, 1966
Page 4



WEQUETONSING no longer has a railroad track but back in the 1920's it did and this shows the snowtrain battering through the drifts toward Harbor Springs. The photographer reported he was buried by snow when the train passed him. (NEWS file photo.)