

**PICTURES & POSTCARDS
OF PAST ERA**

CARP LAKE, EMMET COUNTY, MICHIGAN

CARP LAKE
Emmet County, Michigan

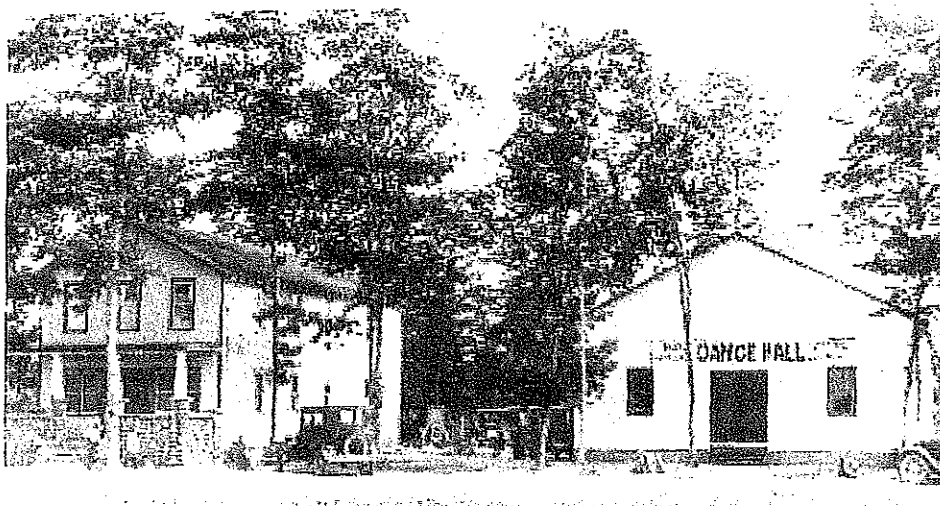
*The village of Carp Lake was founded by Octave Terrian
Given a station on the Grand Rapids & Indiana Railroad
And on January 27, 1880, a Post Office
With Alpheus B. Hendricks as its first postmaster,
Named from a kind of fish still abounding in nearby Carp Lake.
{Information extracted from Michigan Place Names by Romig, L.H.D.*

~~~~~

**DOUGLAS LAKE GROCERY**  
**TEXACO GAS**  
*Pellston, Emmet County, Michigan*



**CARP LAKE  
EMMET COUNTY, MICHIGAN**



**The "Maples"  
Carp Lake, Emmet County, Michigan**

*OLD CARP LAKE DEPOT      CIRCA 1952*  
*On The Grand Rapids & Indiana Railway South of Mackinaw City*  
*Carp Lake, Emmet County, Michigan*

