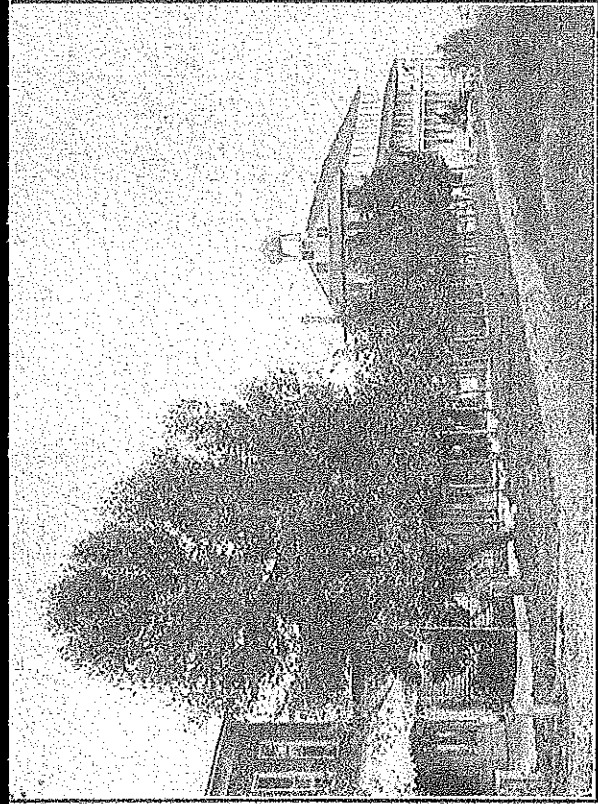


**MICHIGAN'S NORTHLAND**  
**"The Land of Opportunity"**

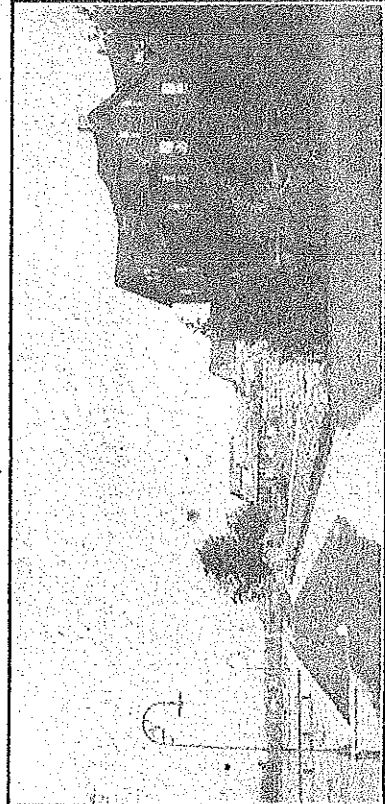
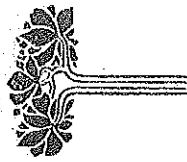
**Printed by**  
**Bird Printing Co. Petoskey**



STREET SCENE AND HOTEL ODEN, ODEN, MICH.

# Michigan's Northland

The Land of Opportunity



## Michigan's Northland

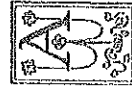
**E**MMET COUNTY, the land of opportunity, where the dreams of homeseekers are realized. Emmet County, the beautiful Northland of Michigan, where thousands of summer visitors flock each year to spend their vacation. Here they enjoy the cool and invigorating lake breezes and drink to excess the pure crystal water that flows from hundreds of artesian wells.

Emmet County, as a whole, is favored in many ways, but there is one township within her borders appropriately named, which was treated more indulgently by the allwise Creator than any of the others. Of what others give promise, Littlefield fulfills.

Littlefield and her villages claim the distinction of having more artesian wells, than all the other townships combined, and it's the only township within the county that has an inland waterway. It is distinguished for its good fishing and picturesque scenery.

There is a line of passenger boats making daily trips to and from Cheboygan during what is known as the resort season; a trip over this route is very fascinating.

### Village of Alanson



**A**LANSON, the larger of two villages in the township, is located on the Grand Rapids & Indiana Railroad, ten miles to the north from Petoskey, which

is the commercial headquarters of the county. It is also intersected by Crooked River, and the West Michigan Pike. These three combined, the railroad, the waterway and the state highway, make unexcelled facilities for transportation.

It's population of 500 citizens are progressive in their ideas and co-operative in their practice, and those who have no disposition to boost are forbidden to knock, which tends to make Alanson a live town, and it is a live market for hundreds of prosperous farmers.

It is also the principal trading center for hundreds of summer visitors, who own beautiful cottages along the shores of our magnificent lakes.

#### Hotel Accommodations

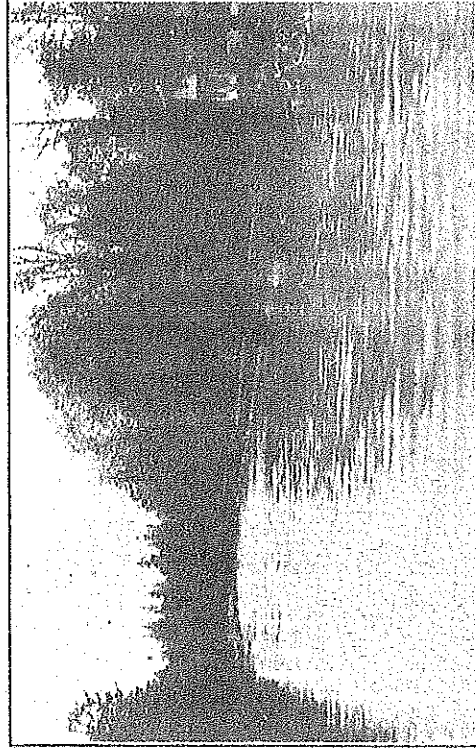
**T**HERE are two hotels, The New Inn and the River View House, also several private boarding houses, that cater to the summer trade. These places offer their guests the comforts of home life at reasonable rates.

A few weeks spent here in calm retirement, mostly in God's out-of-doors, instills new life into the whole system, and inspires one with new hopes, new ambitions, and renewed energy, to do greater and better things.

So, why not escape the fatigues of business, or the cares of state for a time, and partake of the refreshments of pleasure and harmony of peace which Alanson and her environments have to offer.

#### Crooked River

**C**ROOKED RIVER like a silver girdle, unclasped, winding through the lowlands, is a stream of national reputation, because it's a part of the famous Inland Route, its total length being six miles, connecting Crooked and Burt Lakes, but with the exception of where it wends its way through the gay little village of Alanson, as it rolls on to the sea, its winding course is marked only by the handiwork of the Creator and during the summer months is sweet with the warm perfumes of leaf and flower.



CROOKED RIVER, NEAR ALANSON

Even the fish choose this stream for their habitation, and when the wind causes too much commotion on the lakes to make fishing agreeable one can take refuge in this natural harbor, and drift with the slow moving tide beyond the sound of human activities, alone, and near to nature's heart, where there is nothing to annoy, nothing to dis-

turb, except the voice of wild things, and the splash of the big ones. A better place for six miles of good fishing is difficult to find.

### Village of Oden

**O**DEN, the smaller of two villages in the township, is also located on the Grand Rapids & Indiana Railroad, three miles westward from Alanson. This is a summerland village and is truly in harmony with vacation desires.

Oden is most pleasantly situated, overlooking Crooked Lake, with a beautiful shore-line of more than a mile. It is celebrated for its handsome lake-side cottages and artesian wells, which supply nearly every home in the village with running water, the purity of which cannot be excelled.

Of all the resorts in the Northland of Michigan, this beautiful little village is first choice of hundreds of summer visitors, and the peculiar style and good management of its hotel helps to make it a very popular vacation playground.

### To The Homeseeker

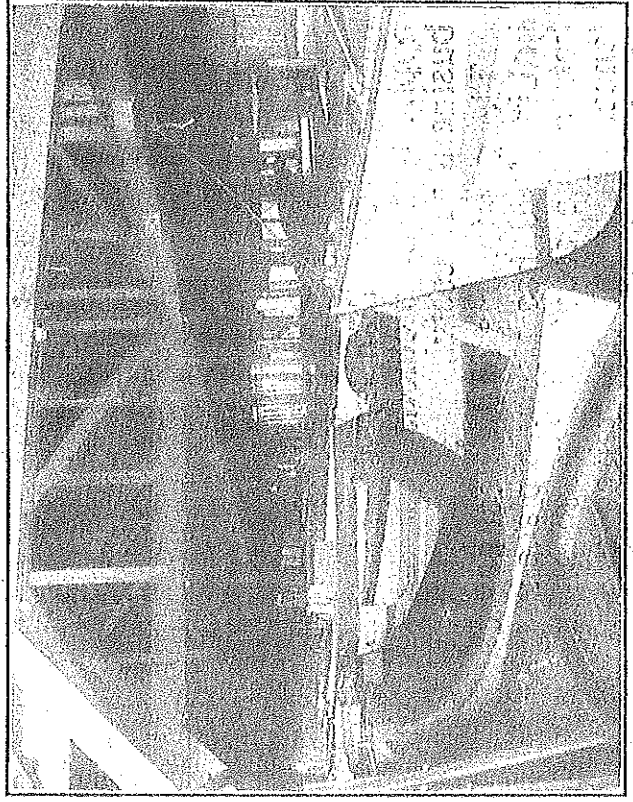
**T**HE homeseeker is offered very attractive inducements at Alanson and vicinity. First to be considered are the health conditions. It has been conceded by the medical fraternity that the only relief to be obtained from the physical tortures of hay-fever, is a visit to the Northland of Michigan. This fact alone is a very convincing argument in favor of Littlefield

resort. A more refreshing or delightful climate cannot be found.

### Schools and Churches

**N**O better recommendation can be given a community than that it is well supplied with progressive schools and churches. There are three schools in Littlefield, and the Alanson Public School ranks fourth in the county, and Emmet County takes third place in the State, so we have reason to be justly proud of the high standard of efficiency which has been attained in our schools.

The fact that we have four churches in the township speak louder than words for the established principles of good citizenship. It is a Christian community, and a Christian people, in that broad sense which



goes beyond creed, or denomination, and recognizes in every man a brother.

The industries of Alanson consist of a modern up-to-date handle factory, turning out about 20,000 broomhandles per day, one saw and shingle mill which supply the local trade, also the Alanson Boat Works, where one can have any kind of boat made to order.

It is needless to say the pioneer days have passed in Littlefield, yet there is no part of Emmet County that has reached a perfect stage of development, and there is still to be had at very reasonable prices unimproved land, known as cut over land. The prices range on this class of property from \$8.00 to \$25.00 per acre according to location, lay of the land and nature of the soil, but there is none of it but what is well adapted to nearly every branch of farming.

Fruit growing has passed the experimental stage in Littlefield. All kinds of northern grown fruit, except peaches, can be raised successfully. One farmer marketed more than 4,000 bushels of apples at Alanson in 1914. This production was only a little more than normal, but there is one fact which cannot be emphasized too strongly, there can be no success in fruit growing other than by hard work, and the application of methods, which make any business successful.

The potato, one of the best paying crops in Littlefield, has a secure place in the markets of the country, because of its excellence. They can be raised on raw land, planted between stumps and roots of a vanquished forest. They thrive on old ground, in orchards, on the steep hill-side

or bottom lands. They have proven the salvation of many a poor pioneer who came to this country without sufficient means to start in general farming. The average price for the past ten years has been 48 cents per bushel.

Cucumber growing is a new industry in Littlefield, but the fact has been demonstrated that it is very profitable, netting as high as \$125.00 per acre in 1914.

There is success in the poultry business, because of the fact that the numerous resorts furnish a home market, where the demand is always good, and the highest prices can be obtained.

For the same reason above given, gardening or truck farming is a very profitable business, early tomatoes netting as high as eight dollars per bushel, and other garden products in proportion, the nature of the soil being well adapted to this kind of farming.

Stock raising is profitable. This fact is sometimes overlooked, but the whole story can be summed up in very few words. General farming returns a revenue for its labor, SAFE AND SURE. Nowhere are the returns better or more permanent for the amount invested in money and labor, than in the Township of Littlefield, Emmet County, Michigan.

The President of the Village of Alanson, or the supervisor of the township, will be glad to answer inquiries, or furnish any information in their possession, free of charge, about this much favored township. We courteously court the fullest investigation.

"A FARMER FOR EVERY FORTY" is our slogan.